

Jacuzzi® Massage Chairs

JPro704XR™

Massage Chair User Manual



Please read SAFETY INSTRUCTIONS carefully before using the JPro704XR™

Key Features

1. Achieve an unparalleled deep tissue massage with a 5-inch roller extending from neck to hamstrings, offering an effective and comprehensive experience.
2. Includes ShapeSense™ to detect the shape and size of your body for a customized massage experience.
3. Converts into GravityFree™ position with 1-button touch, which moves your feet above your head, allowing your body weight to be more evenly distributed, providing the ultimate in relaxation.
4. The Jacuzzi® Massage Chair slides forward in the frame with CompactGlide™ before reclining, which requires only 3(three) inches of clearance behind the massage chair.
5. CalfRelief Pro™ gently kneads your achy calves and OmniRelief Pro™ delivers an air massage to your heels toes and the tops of your feet.
6. HipSculpt™ provides an air compression massage that targets the waist, thighs and glutes.
7. PalmSoothe™ provides an air pressure massage from your fingertips to your elbow; targeting areas prone to carpal tunnel and arthritis.
8. LegExtender Pro™ automatically extends the legrest up to 10 inches, offering optimal comfort even for taller users.
9. Massage Assist+™ customizes your massage experience according to your preferences.
10. FlexRelief™ relieves pressure in your spine and joints.

Note:

Jacuzzi® Massage Chairs and their partners may make product modifications and enhancements. Specifications may change without notice. International products may be configured differently to meet local electrical requirements. Dimensions are approximate. Manufactured under one or more United States patent numbers Other patents may apply.

Table of Contents



Reference	Safety Precautions 1 External Structure Parts 5 Internal Structure Parts 6 Mechanical Components Diagram 7 Mechanical Components List 8
Setup	Installation 7 Before Massage Operation 13
Massage Chair Operation	Built-In Controller 15 Tablet Remote Control 17 Using Voice Commands 25 Powering Down 27
Maintenance	Cleaning the Massage Chair 28
Additional Information	Troubleshooting 29 Technical data 30 Warranty 30

Thank you for choosing Jacuzzi® JPro704XR™.
 Please read this manual carefully before using the massage chair.
 Please keep this manual in a safe place for future reference.

1 Safety Precautions

Reference

- Please read this manual carefully to make sure the installation and operation of the Jacuzzi® Massage Chair is correct.
- Safety Precautions, which include both warnings and cautions, are important for your safety. Please read before operating the massage chair.

 Warning	This sign indicates warning of causing injury or death.
 Caution	This sign indicates caution of causing possible injuries or damages.

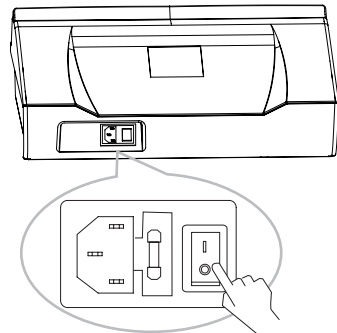
Warning

This product may not be suitable for users who experience increased discomfort, risk of accident, or bodily harm. Users with the following conditions should consult their doctor before use.

- Osteoporosis, vertebral fractures, and acute painful diseases such as sprains or muscle strains.
- Pacemakers or other implanted medical devices - The vibrations and electromagnetic fields from massage chairs could interfere with medical devices.
- Cancer - Massaging directly over tumors is not recommended. Check with a doctor first.
- Perceptual disorders due to high levels of peripheral circulatory disturbances such as diabetes.
- Protruded invertebrate discs.
- Pregnant women and those who have recently given birth, as well as people with poor health.
- Sensitivities or allergies to heat.
- Users that have been diagnosed with narcolepsy.
- Sensory loss - Those with reduced sensation may not realize if the massage pressure is uncomfortably high.
- Those under the influence of drugs, alcohol or medication that causes drowsiness - Impaired users have a greater risk of falls or improper use.
- Children under the age of 14 - Massage chairs are designed for adults and can overextend children's muscles and joints.

Grounding instructions

The massage chair is equipped with a cord that has a grounding conductor. The plug must be plugged into an appropriate socket that is properly installed and matched with the plug. Always use a surge protector.



Replacing the fuse

If the fuse is burned out, turn off the on/off switch and unplug the power from the wall outlet. Open the lid covering the fuse which is located in the switch box. Make sure the replacement fuse is the same size as the current burnt out fuse. Contact an electrician if you need assistance.

Safety Precautions

Reference

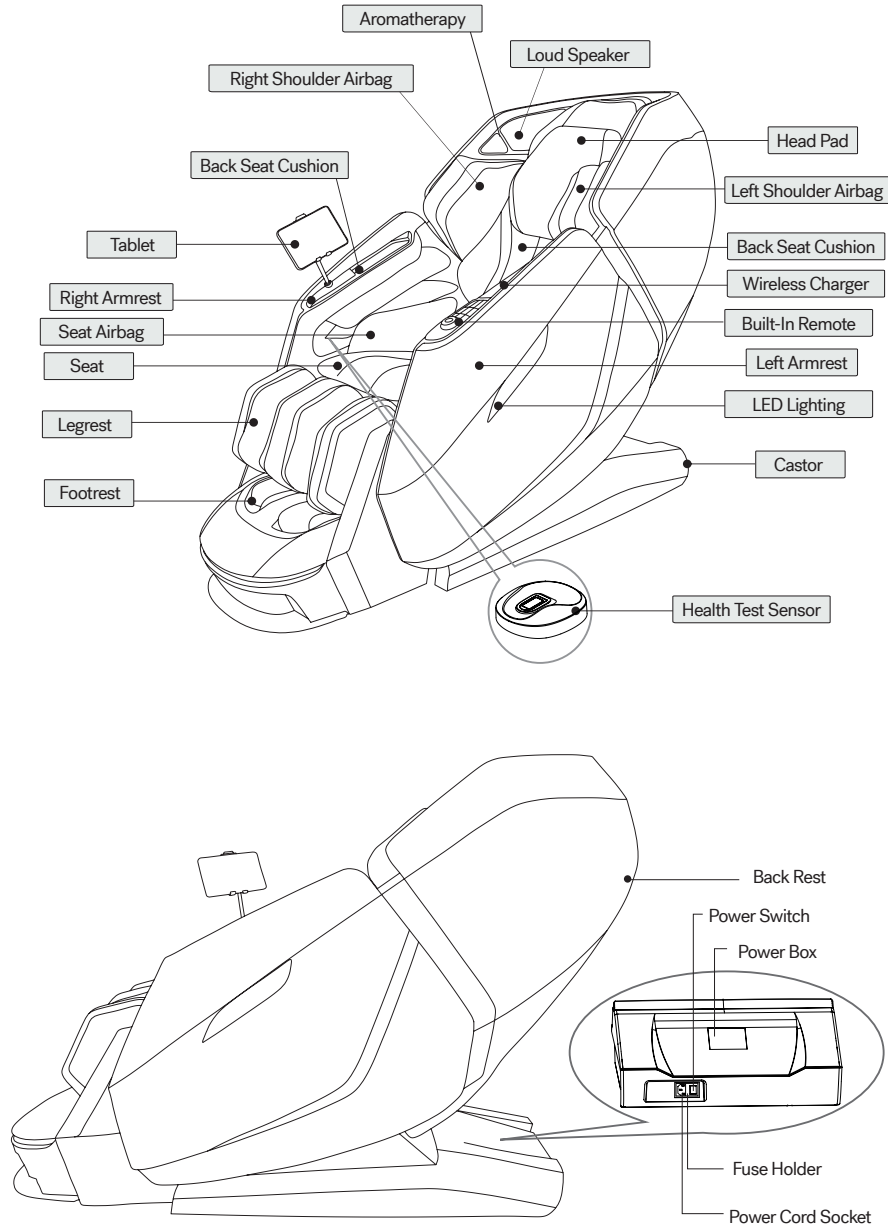
Warning

Accident or Injury	<ul style="list-style-type: none"> • Before operating the Jacuzzi® Massage Chair, please make sure to check the area around the massage chair for any obstructions. • When using the backrest, calf up & down, or calf extend, be sure to check that there is no interference or objects in the area (behind, under, or in front of the massage chair). • In the event of a physical abnormality or abnormality in use, stop using the massage chair immediately and ask a doctor. • Use caution when massaging around sensitive areas like the head and neck. Pay close attention to the movement of the massage rollers and avoid over-massaging or applying too much pressure. • DO NOT massage the abdomen or knees with this machine. • If you want to leave your seat during the massage, you must stop the massage chair before you leave the seat. • DO NOT use the massage chair with other instruments. • DO NOT allow children or pets to play on or around the massage chair (especially while in use.) • DO NOT sit or stand on the backrest, armrests or legrests. • Users requiring assistance should be accompanied by a parent, guardian, or aide for safety. • Before moving the massage chair, the backrest and legrest must be angled back to their original position. • DO NOT fold cushions for storage. • DO NOT operate the massage chair without the user properly seated and positioned in the massage chair. • DO NOT fall asleep in the massage chair.
Fire and Electric Shock	<ul style="list-style-type: none"> • When assembling, make sure the massage chair is unplugged and the power is off. • Insert the electrical plug from the massage chair into a compatible power outlet. Make sure the plug is completely inserted into the socket to reduce short circuit or fire risk. • Always unplug the power cord when not in use. Be sure to turn off all massage chair functions by pressing the on/off switch first before unplugging. • Power cord, plug, and socket can't be used in broken or loose contact condition. • DO NOT use other electric power except rated voltage in case of fire, electric shock or any breakdown. • DO NOT use power cord or operate the massage chair if the cord or plug has been damaged, frayed, knotted, twisted or crushed. • DO NOT use if the massage chair is wet or if the user is wet. • DO NOT use the massage chair outdoors. • DO NOT use the massage chair in areas where the humidity is high such as a sauna or steam room. • Keep the power cord away from heated surfaces. • Never plug/unplug the power cord plug socket with wet hands. • Always unplug the massage chair from the electrical outlet immediately after using and before cleaning. DO NOT leave the chair unattended while plugged in.
Disassembly and Maintenance	<ul style="list-style-type: none"> • If the massage chair becomes dysfunctional, defective, or wet, contact your authorized retailer or send the massage chair to the assigned service agent. Self-modification, disassembly or maintenance is forbidden. • If power cord or plug is damaged, please DO NOT replace it yourself, please contact your authorized retailer for replacement. • To avoid electric shock or bodily harm, please DO NOT open or disassemble any part of the massage chair; there are no user-serviceable parts. • Check leather or cloth material on the back and other areas to see if they are broken or not. If broken, even if it seems to be a minor issue, please stop using the massage chair, unplug the power and have it repaired.

3 External Structure Parts

Reference

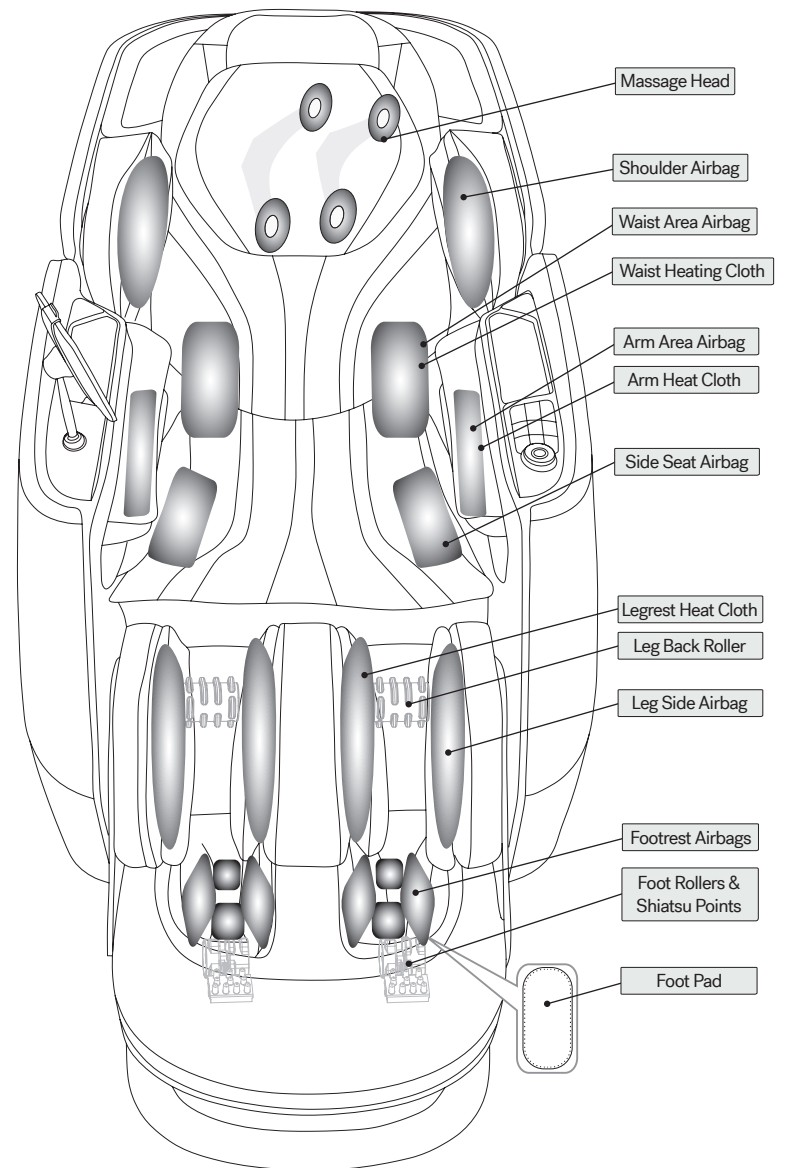
External Structure



Internal Structure Parts

Reference

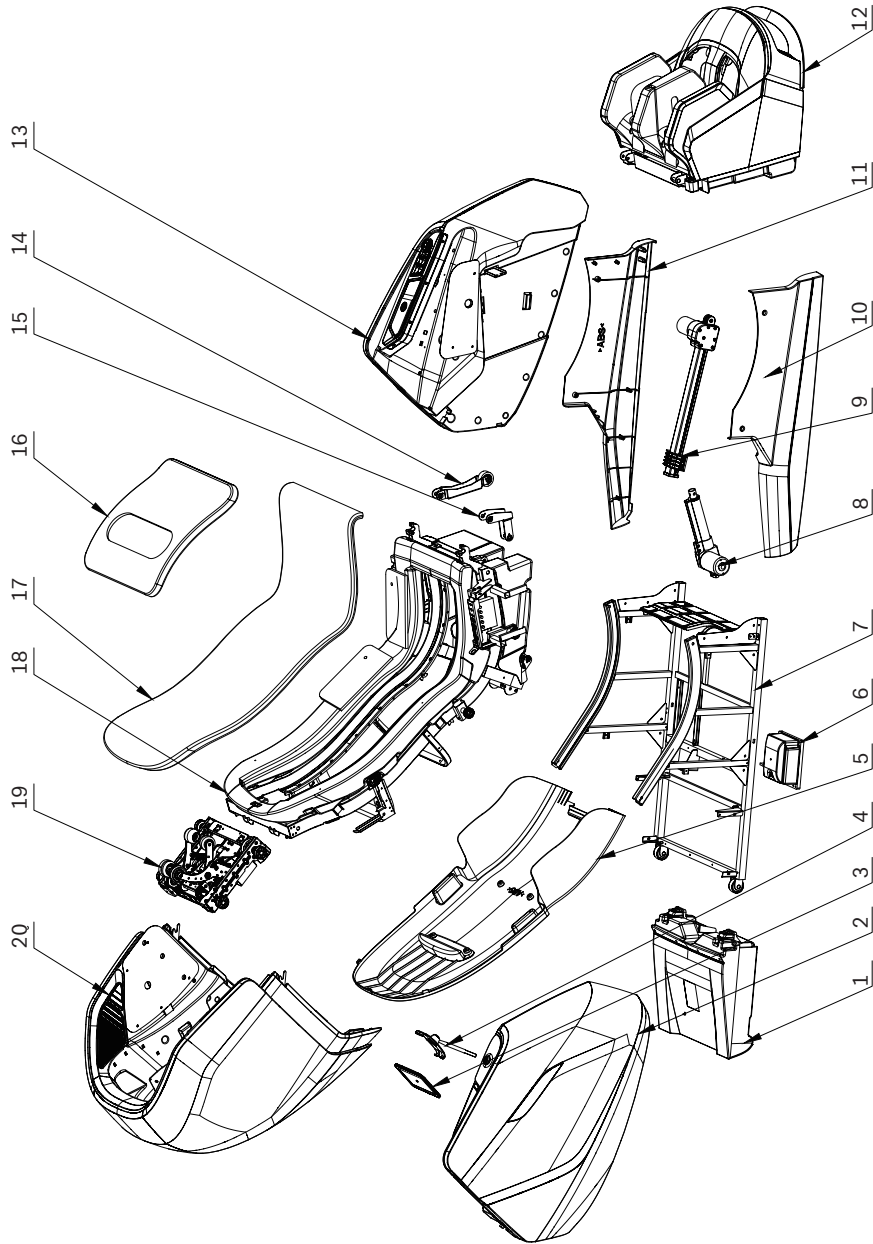
Internal Structure



5 Mechanical Components Diagram

Reference

Explosion Diagram



Mechanical Components List

Reference

6

Part		Qty
1	Power Box Assembly	1
2	Right Armrest Assembly	1
3	Tablet Remote	1
4	Tablet Bracket Assembly	2
5	Backrest Cover	1
6	Air Pump	1
7	Seat Frame Assembly	1
8	Electric Actuator	1
9	Seat Actuator	1
10	Right Fender	1
11	Left Fender	1
12	Legrest Assembly	1
13	Left Armrest Assembly	2
14	Legrest Actuator	1
15	Left Armrest Assembly	1
16	Shoulder Cushion	2
17	Back Seat Cushion	1
18	Backrest Assembly	1
19	Massage Mechanism	1
20	Shoulder Assembly	1

7 Installation (1)

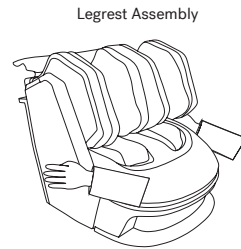
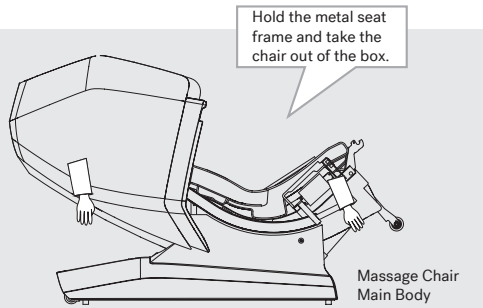
Setup

Scan the QR code to follow along with a video assembly of the JPro704XR.

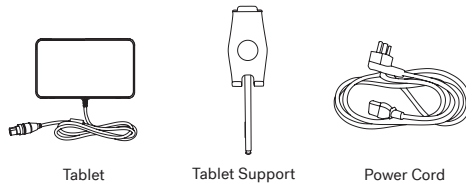


Step 1. Remove the massage chair from the box.

1. Remove the accessories and main chair from the box (Using two people).
2. Confirm all of the accessories are accounted for.



The Accessories



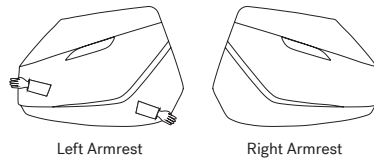
Tablet

Tablet Support

Power Cord

For steps 3 and 4 please reference the QR code to the assembly video.

3. Take out the left and right armrest from the armrest box, put the armrest on the table or ground and lay flat carefully to prevent scratches.



Left Armrest

Right Armrest

4. Taking out the legrest device from the legrest box, grabbing the front and back two sides of the legrest and remove from box.

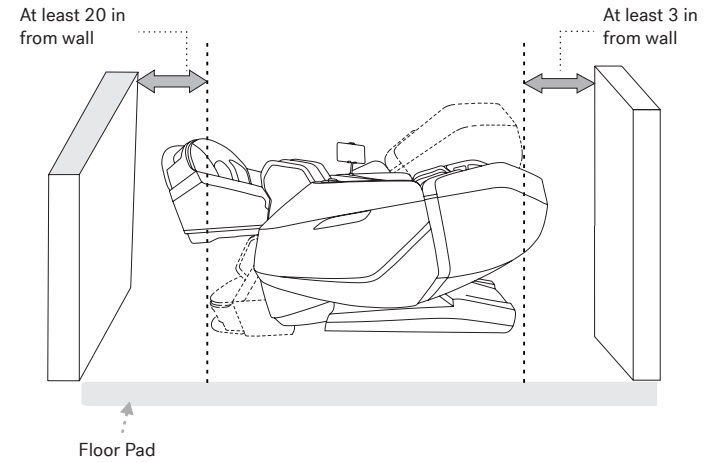
Installation (2)

Setup

8

Step 3. Check for adequate space.

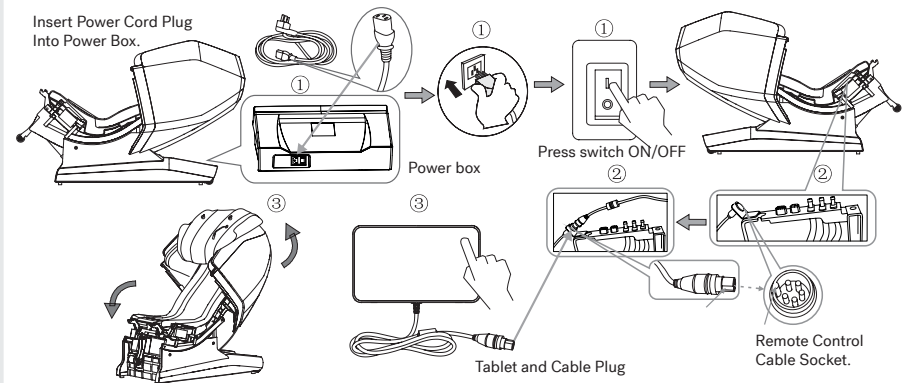
Ensure there is enough space behind the massage chair to allow for it to recline



Consider using a rug or floor pad to avoid damage to floor.

Step 4. Massage Chair Position Return

1. Insert one end of power cord into the socket on power box, insert the other end into outlet.
2. Switch the power ON and the backrest will go up and the seat will go down.
3. After the backrest returns to the normal position, turn off the power and unplug the massage chair from the wall.



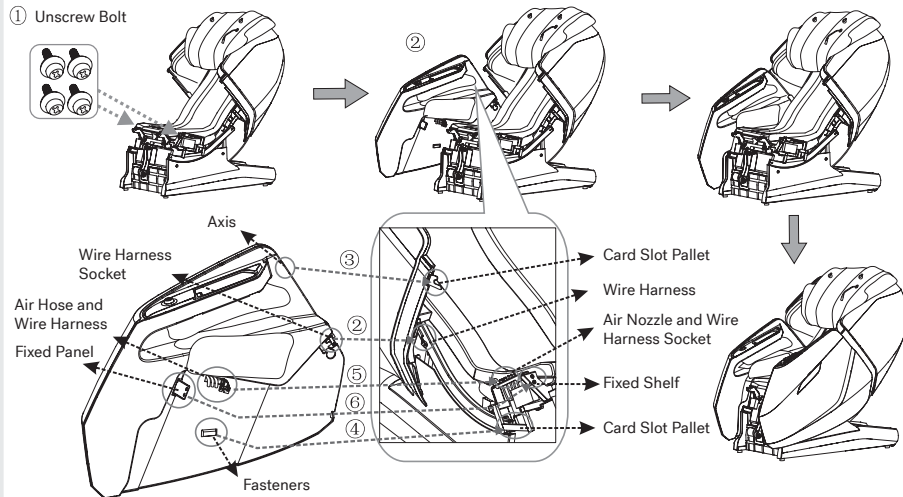
9 Installation (3)

Setup

Step 5. Assembling the Left and Right Armrests.

1. Using a Phillips-head screwdriver, unscrew the M6 bolts on the seat frame.
2. Lift the shoulder and armrest and place the shoulder massage assembly inside near the backrest side. Insert the fixed axle 1 into fixed hole 1 on the backrest side and adjust the shoulder to the correct position.
3. Connect the wire from the shoulder part to the socket on the side of the backrest.
4. Align fixed hole 2 on the top of the shoulder part with fixed axle 2 on the top of the backrest.
5. Align the two fixed hole 3s on the shoulder with the two fixed axle 3s on the side of the backrest.
6. Insert the fixed axles mentioned above into the fixed holes and ensure they are in the correct position. Move the shoulder and armrest downwards and insert the square tube on the armrest into the plate on the frame side of the seat. Slide to lock it in place.
7. Align the front and back panel on the armrest with the bolt hole on the seat frame and screw the M6 screws tightly.
8. Connect the air hose from the armrest to the air nozzle from the seat.
9. Connect the LED wire from the armrest to the LED wire from the seat.

⚠ Caution: Avoid Squeezing the air hoses when assembling.



Scan the QR code to follow along with the video for step #5.



Installation (4)

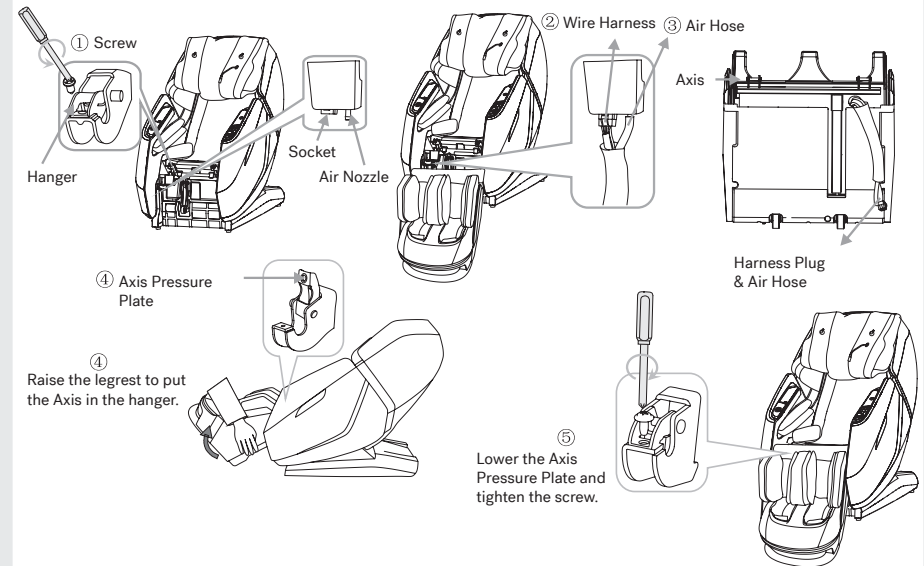
Setup

10

Step 6. Assemble and Install Legrest.

1. Unscrew the bolt from the hanger on the legrest.
2. Connect the air hose on the legrest with the air nozzle on the main body of the chair.
3. Connect the wiring harness plug into the socket on the main body of the chair.
4. Raise the axis pressure plate, raise the legrest with your hands, put axis on the legrest into the hangers on main body, and put the axis pressure plate down.
5. Screw back tightly.

⚠ Caution: Avoid Squeezing the air hose when assembling.



To Disassemble: Disconnect the air hoses between the seat and armrest, unscrew the four m6 screws that attach the armrests to the seat frame, lift up the front of armrest, let the square tube of armrest move out from the plate of seat frame; then press the button on the fixed hole located inside the back of the armrest and pull the end of armrest at same time, move the fixed hole away from the fixed bolt located on the side of backrest, then finish disassembling.

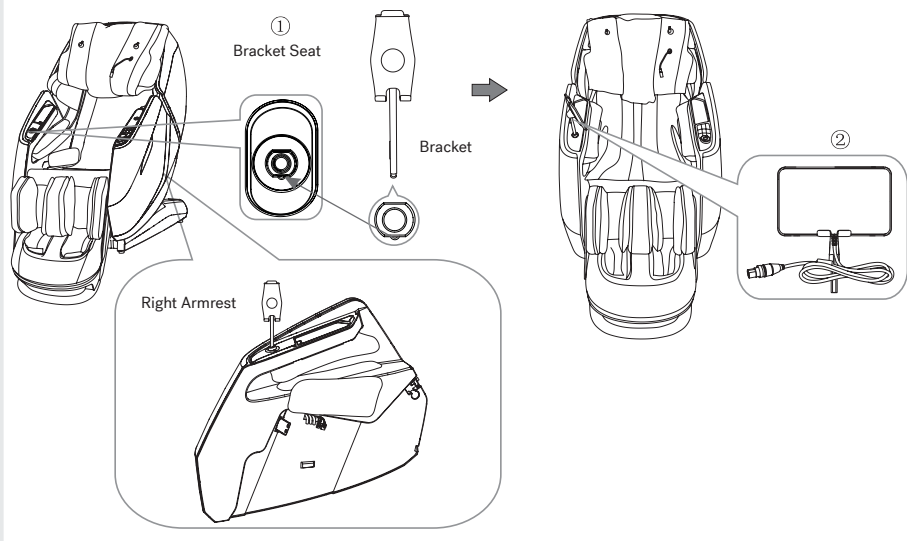
To uninstall the legrest from the chair, unscrew the bolt from the hanger on the chair. Lift the axis pressure plate. Lift the legrest to lift the axis from the hanger. Disconnect the wiring harness from the socket. Disconnect the air hose from the air nozzle.

11 Installation (5)

Setup

Step 7. Install the Tablet Holder

1. Insert the plate bracket rod into the bracket seat of the right armrest. Insert it according to the shape of the bracket and the shape of the seat hole until the bottom screw of the bracket is stuck in place.
2. Put the tablet into the holder.



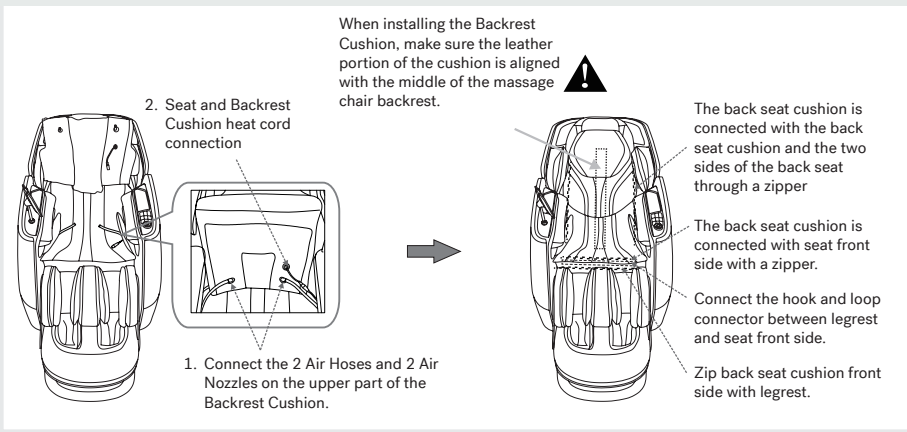
Step 8. Connect the air hoses, the heat connection, and install the back seat cushion.

Put the back seat cushion and head pad onto the backrest and connect the two parts with the zipper and hook and loop fastener.



★ Helpful Tip

In order to get the correct body test data for a comfortable massage, when you sit on the massage chair, please make sure the bottom rim of the head pad sits flush with your ears before zipping the two parts together.



Installation (6)

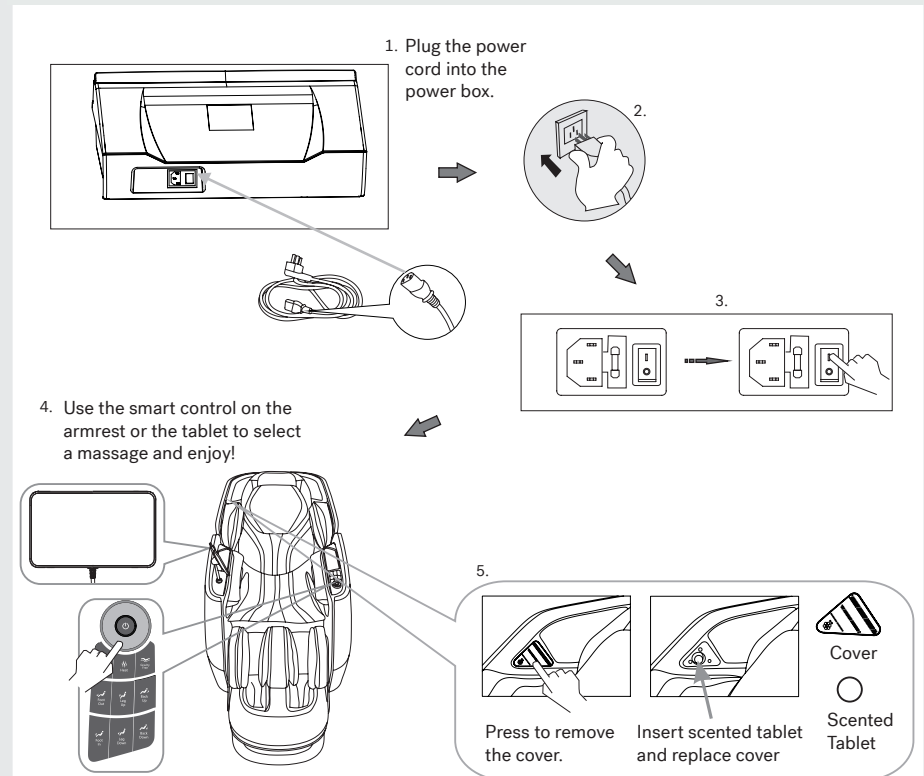
Setup

Step 9. Powering on the massage chair.

1. Plug the power cord into the socket on the power box as shown in the right picture.
2. Insert the plug end of the power cord into the electrical outlet.
3. Turn on the switch behind the power box.
4. Use the smart control on the armrest or the tablet to select a massage and enjoy!



Make sure the switch is off before you insert the plug of the power cord into the socket.



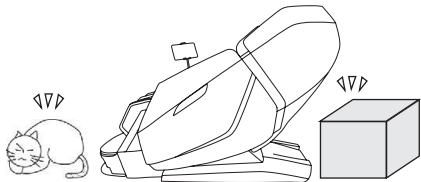
13 Before Massage Operation

Setup

Refer to this page before using your Jacuzzi® Massage Chair.

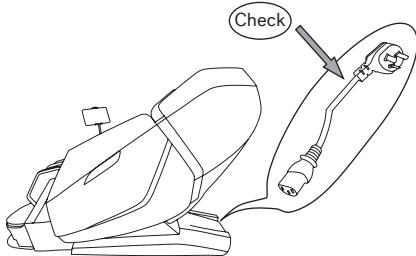
1. Check space in front

Check the areas when the back and legs extend to make sure there are no obstructions.



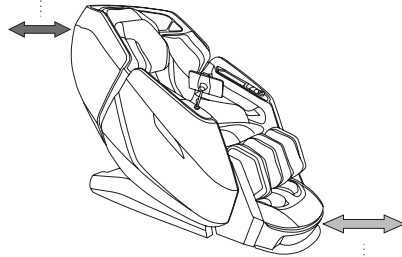
2. Check power cord and plug.

• Ensure plug is clean, dry and free of dust. DO NOT bend or apply pressure to plug.



3. Space needed for operation.

• At least 3" inches from the wall behind.

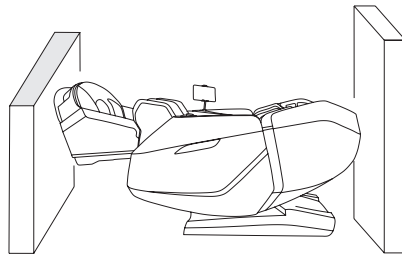
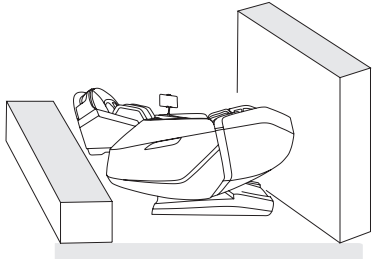


• At least 20" inches in front of the legrest. ...

4. Check surroundings

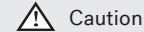
• When the backrest or legrest reclines or extends, please make sure to:

1. Check for obstructions in front of and behind the massage chair.
2. Ensure there is 3 in of space behind and 20 in of space in front of the massage chair.



Before Massage Operation

Moving the massage chair.



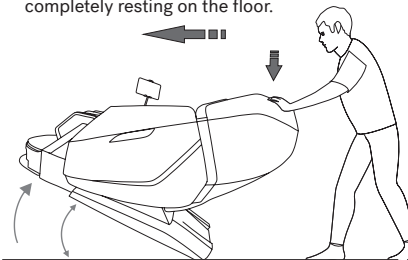
Caution
DO NOT move the massage chair when it's powered on in case of accidents or damage

Prepare the massage chair

- Bind the cables and put them in the seat to avoid damage when moving.
- Avoid bumping the massage chair with your body or with another object. This could damage the internal mechanisms of the massage chair.
- DO NOT use the castor if the floor is easily damaged. The massage chair will need to be lifted.
- Using your bodyweight, push down on the back of the massage chair in order to raise it onto its castors. Then, slowly guide it to the desired location.



Lean the massage chair back so it's resting on the castors. Push the massage chair on the back castors to the desired destination, then slowly release the massage chair until it's completely resting on the floor.



No More Than 40 Degrees Castors

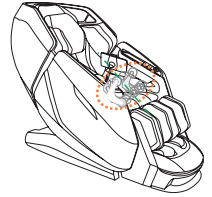
Please hold the footrest to move the massage chair as shown in the picture in case any scratches on the leatherette.



Note: the armrest does not move when the back of the massage chair is reclining.

ShapeSense™ Setup

1. Make sure the massage rollers stop in the upper part of the backrest, then sit on the massage chair slowly to avoid injury caused by the massage head being in the wrong position.



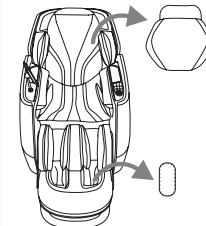
2. When setting up ShapeSense™, if the massage head can not find the shoulder position, it will default to the middle position.

3. Correct position: Your back should rest on the back of the chair, with your head resting on the pillow.



- Sit up straight with good posture to prevent incorrect ShapeSense™ detection which could cause discomfort.

- You will hear a "beep" once ShapeSense™ is complete. If you need further adjustment of rollers, press the up or down key on the remote.

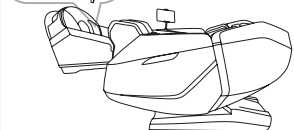


- You can remove the pillow and the foot pad to increase massage pressure.

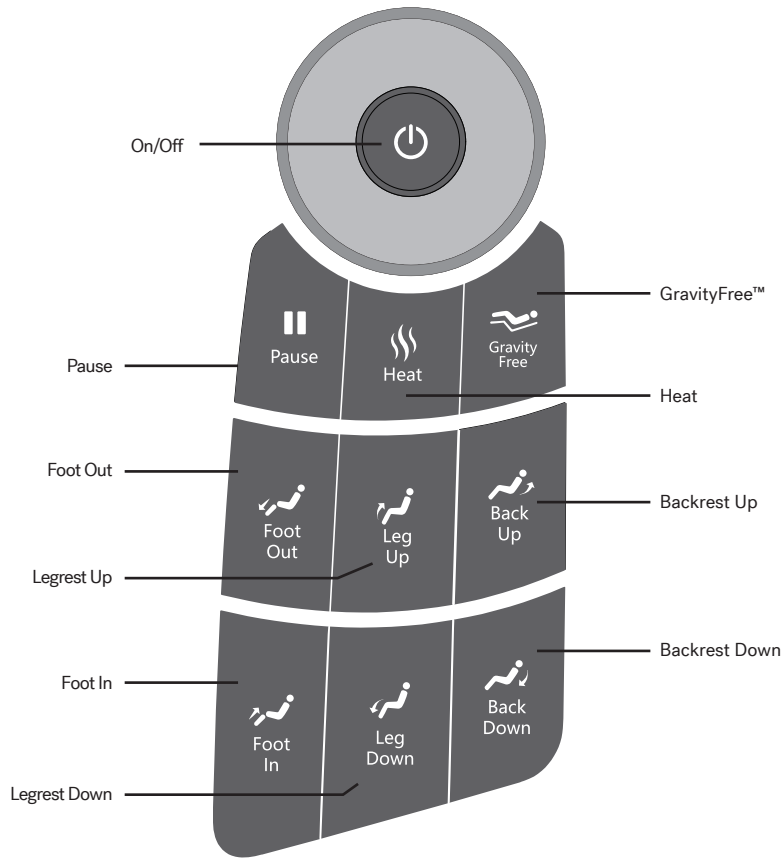
Foot Safety Anti-Clip Function


When adjusting the footrest angle, the massage chair can automatically detect the length of your legs. Please avoid placing your feet on the outer cover of the footrest during this process,


as it may interfere with height detection and result in footrest retraction failure. Additionally, be aware that there is an anti-pinch reminder on the auto program menu of the tablet controller





Manual Control





- 


1. Press and hold the Power button for 2 seconds, the massage chair will power on; while ON, press and hold it for 2 seconds to turn off the chair and reset to the default position.
- 


2. Press the Pause button to pause the massage, the back lighting will turn red, press it again, to restart the massage, the back lighting will turn white again.
- 


3. Press the Heat button to adjust the Heat to level one, level two, level three or to turn the heat off.
- 


4. Press the GravityFree™ button to switch between the GravityFree™, leisure, sleep positions or to reset the chair to the default position.
- 

5. Press and hold the Foot Out button to extend the footrest, release it to stop moving.
- 

6. Press and hold the Foot In button to retract the footrest, release it to stop moving.
- 

7. Press and hold the Leg Up button to raise the legrest, release it to stop moving.
- 

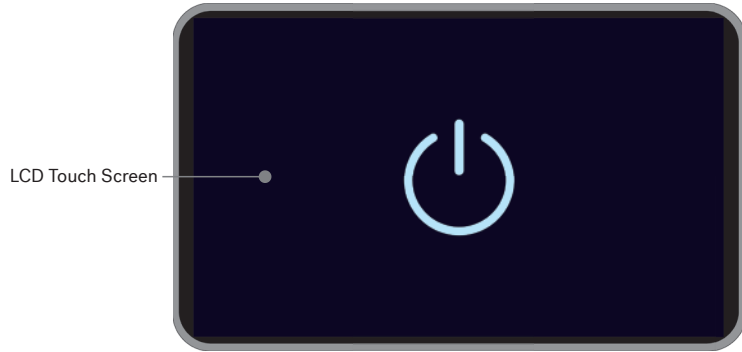
8. Press and hold the Leg Down button to lower the legrest, release it to stop moving.
- 

9. Press and hold the Back Up button to raise the backrest and lower the legrest, release it to stop moving.
- 

10. Press and hold the Back Down button to lower the backrest and raise the legrest, release it to stop moving.

17 Tablet Remote Control (1)

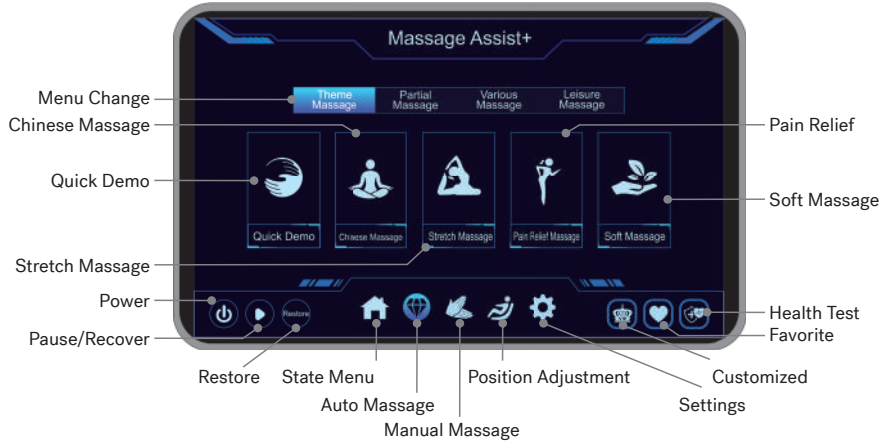
Tablet LED Menu



LCD Touch Screen

The tablet will turn ON automatically when the chair is powered on and will display the power screen. If the button is not pressed for 2 minutes, the tablet will go dark

Theme Massage Menu



Menu Change
 Chinese Massage
 Quick Demo
 Stretch Massage
 Power
 Pause/Recover
 Restore
 State Menu
 Auto Massage
 Manual Massage
 Position Adjustment
 Customized Settings
 Pain Relief
 Soft Massage
 Health Test
 Favorite

Press this icon to enter Quick Demo mode. The default time for this auto program is 8 minutes.

Press this icon to enter Chinese Massage mode. The default time for this auto program is 20 minutes.

Tablet Remote Control (2)

Press this icon to enter Stretch Massage mode. The default time for this auto program is 20 minutes.

Press this icon to enter the Pain Relief Massage mode. The default time for this auto program is 20 minutes.

Press this icon to enter the Soft Massage mode. The default time for this auto program is 20 minutes.

Power icon- When pressed the icon will light up and the chair will start working after powering on.

Pause/Recover icon- Press this icon to stop all massage functions, press it again to continue all massage functions.

Restore icon- Press this icon to keep the chair from going back into the upright position after the massage ends, the chair will reset normally if you don't press this icon.

Home Menu icon- Press this icon to navigate to the home menu.

Auto Massage icon- Press this icon to enter the Auto Massage menu.

Manual Massage icon- Press this icon to enter the manual massage menu.

Position Adjustment icon- Press this icon to enter the position adjustment menu.

Setting icon- press this icon to enter setting menu.

Customized Message icon- Press this icon to enter the customized setting menu.

Favorite icon- press this icon to enter the my favorite menu to save or delete favorites.

Health Test icon- Press this icon to enter the health test menu.

Massage Menu



Current Message
 Message Intensity
 Foot Roller
 Favorite
 Voice Control
 Air Pressure
 Arm/Calf/Waist Heat Control

Voice control icon- press this icon to enter voice command menu.

Favorite icon- press this icon to save the current message to my favorite. If saving more than 8 modes, it will remind you to delete some before saving.

Foot Roller icon- Press this icon to turn the foot roller function on or off.

Press this icon to increase or decrease 4D intensity.

Arm/Calf/Waist Heat icon- press this icon to turn the heat on or off and adjust the levels of heating.






Press the "Up" or "Down" arrow to increase or decrease air massage intensity.

The body image will display the heat, massage rollers position, foot roller and calf massaging statuses.

19 Tablet Remote Control (3)

Partial Massage Menu



-  Press this icon to start Spine Care Massage.
-  Press this icon to start Waist and Glutes Massage.
-  Press this icon to start Leg and Foot Massage.
-  Press this icon to start Back and Waist Massage.
-  Press this icon to start Yoga Massage.

Various Massage Menu








-  Press this icon to start Neck and Shoulder Massage.
-  Press this icon to start Glutes Massage.
-  Press this icon to start Sports Recovery Massage.
-  Press this icon to start Glutes Therapy Massage.
-  Press this icon to start Neck Knead Massage.

Tablet Remote Control (4)

-  Press this icon to start Neck and Shoulder Massage.
-  Press this icon to start Glutes Massage.
-  Press this icon to start Sports Recovery Massage.
-  Press this icon to start Glutes Therapy Massage.
-  Press this icon to start Neck Knead Massage.

Leisure Massage Menu



-  Press this icon to start Wake Me Up Massage.
-  Press this icon to start Nap Time Massage.
-  Press this icon to start Bedtime Massage.
-  Press this icon to start Vitality Massage.
-  Press this icon to start Relaxation Massage.

21 Tablet Remote Control (5)

Massage Chair Operation

Position Adjustment Menu



Voice Command Menu



Tablet Remote Control (6)

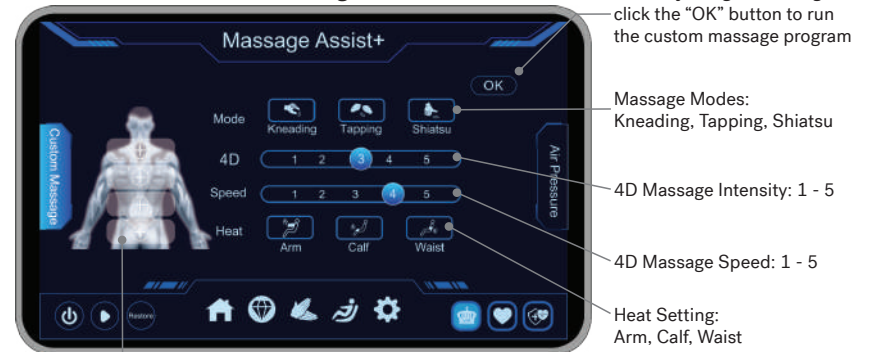
Massage Chair Operation

Manual Massage Menu



4D Massage Adjustments:
Speed, Width, Foot Roller

Custom Massage Menu



The custom position icon, you can choose from four massage positions including "Neck & Shoulder", "Back", "Waist and Hips" or "Thighs & Glutes" with the corresponding display. If you enter the custom massage menu from another menu, the original position and status will not change.

23 Tablet Remote Control (7)

Massage Chair Operation



After completing the settings, click the "OK" button to run the customized program.

Airbag position key, can adjust the level after selected.

Whole Air Pressure Intensity Setting Slider, defaulting to level 3.

Upper Body Air Pressure Intensity Setting Slider, defaulting to level 3.

Waist & Hips Air Pressure Intensity Setting Slider, defaulting to level 3.

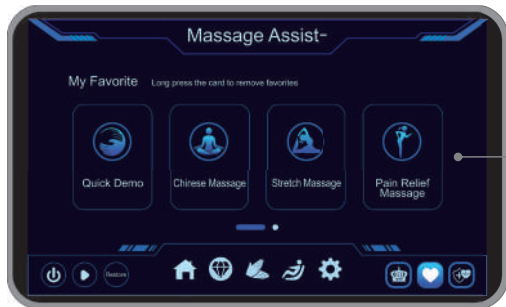
Leg & Feet Air Pressure Intensity Setting Slider, defaulting to level 3.

Calf Rubbing Speed Setting Slider

Foot Roller Setting Slider

Full Body Airbags Display Status, illuminated means selected.

My Favorite Menu



It can save eight programs at most. Press the program and press to remove. Manual modes can't be saved. The saved programs will be saved.

Settings Menu



Other functions including Voice Control and Aromatherapy.

24 Tablet Remote Control (8)

Massage Chair Operation

Health Test Menu



Test Note: Adjust to the most comfortable position, put your index finger on the sensor in the right armrest. Relax and adjust your breathing, press to start testing, enter the test progress menu.

Start testing- Press this icon to start the health test.

Blood oxygen, micro-circulation, heart rate and fatigue level data are only for reference.

Health Test Progress Menu



Health Test Progress Bar

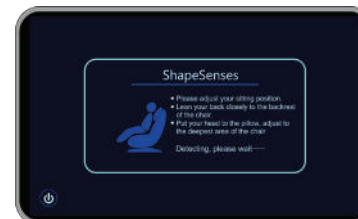
Health Test Result Menu



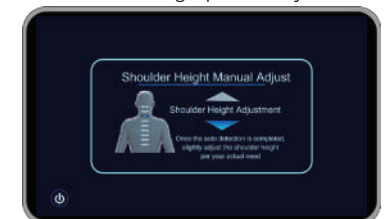
Blood oxygen, micro-circulation, heart rate and fatigue level data will display after detection.

Press this button to test again.

ShapeSense™ Indicator Screen

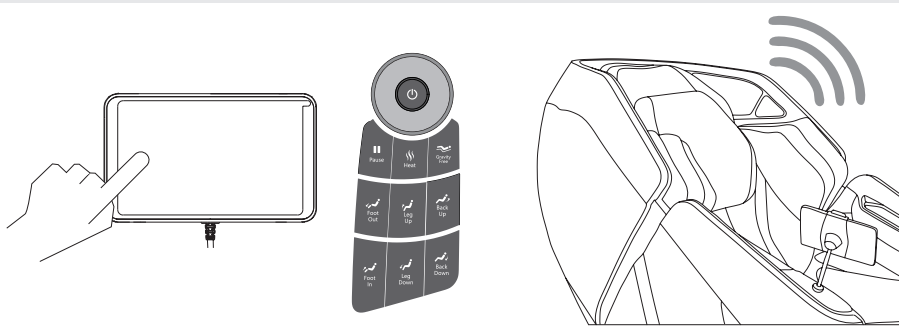


When ShapeSense™ is completed, you will enter into the manual shoulder height position adjustment menu.



Using Smart Voice Control

In the standby mode, press the power button on the tablet controller or the controller to turn the massage chair on. At this time, the voice recognition system enters the waiting status.



When using the voice command function, please say “Hello, Jacuzzi” before the command you want to use, and the system will recognize your voice commands.

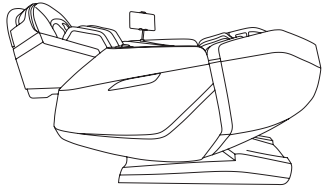
When the massage chair recognizes the command, there will be a corresponding voice from the speaker that responds. This means the command recognition is successful.

Please say one of the following voice commands, if it is not recognized, please pause for 2 seconds, turn up the volume and say it again. To switch between male and female voices say “Hello, Jacuzzi “ then say “switch to male voice” or “switch to female voice” when you hear “power on for you” switch to male voice (or female voice), power the massage chair down and disconnect the massage chair power, then reconnect the power and switch on again.

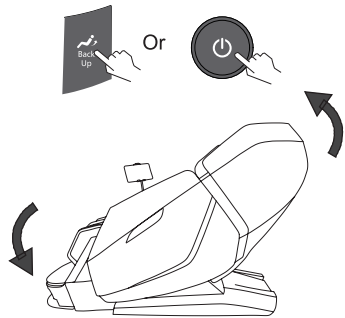
List of Voice Commands

Wake Word: “Hello Jacuzzi”	Compression Off
“Stop Massage”	Backrest Up
“Increase Volume”	Backrest Down
Decrease Volume	Legrest Up
Quick Demo	Legrest Down
Change Massage	Leg Extension
Chinese Massage	Leg Retraction
Pain Relief Massage	Increase Speed
Stretch Massage	Decrease Speed
Neck and Shoulder Massage	Increase 4D
Glutes Massage	Decrease 4D
Back and Waist Massage	Gravity Free
Sports Recovery Massage	Position Reset
Soft Massage	Recline Position
Relaxation Massage	Foot Rollers On
Vitality Massage	Foot Rollers Off
Yoga Massage	Full Body Massage On
Spine Care Massage	Partial Massage On
Waist and Glutes Massage	Point Massage On
Leg and Foot Massage	Rollers Up
Wake Me Up Massage	Rollers Down
Nap Time Massage	Widening/Maximum Width
Bedtime Massage	Narrowing/Minimum Width
Neck Knead Massage	HeatRelief Pro On
Glutes Therapy Massage	HeatRelief Pro Off
New Technique	Pause
Full Body Compression	Un-pause
Increase Compression Pressure	Voice Command On
Decrease Compression Pressure	Voice Command Off

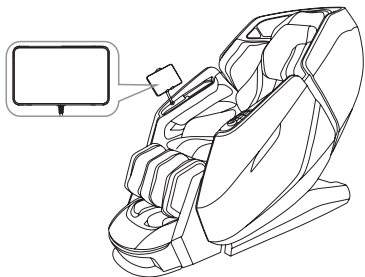
- 1 When returning the massage chair to the upright position, make sure there are no obstructions under the legrest.



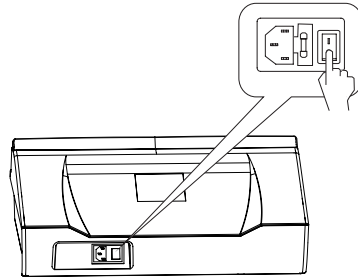
- 2 Return the backrest and legrest to their normal positions with the remote. (Or press the ON/Off button to restore the massage chair to the normal position)



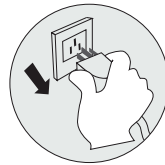
- 3 Put the controller back into the controller bag on the right armrest after the massage chair returns to the initial position.



- 4 Switch off the power.



- 5 Unplug the massage chair from the socket.



- 6 Clean the massage chair if necessary.

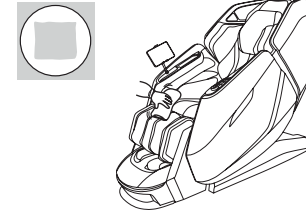
Attention!

- After using, press the Power button/icon to end the massage and wait for the massage chair to return to the initial position.
- Make sure to unplug the massage chair to avoid any unexpected injuries or damages.
- After using, turn off the power and unplug the massage chair. Avoid moisture, dirt and aging of insulation to avoid damages.

Synthetic leather

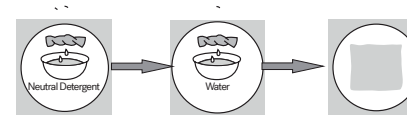
● **General cleaning**

Gently clean with a soft and dry cloth.



● **If leather is dirty**

1. Dip soft cloth into neutral detergent solution, squeeze it then clean the stain on the surface gently.
2. Wash cloth, squeeze it and wipe with detergent.



3. Clean it softly with dry cloth.
4. Allow to air dry (air blower is prohibited)

Cloth material

1. Dip cloth into weak neutral detergent, squeeze it and clean the material surface.

2. Brush the dirty parts with weak neutral detergent. (Avoid excessive brushing)

Excessive cleaning may cause damage to cloth material.

3. Wipe with a damp cloth.

4. Allow to dry.



Plastic parts

1. Dip cloth into neutral detergent, squeeze it and clean.



2. Wipe with a damp cloth.



3. Allow to dry.

Clean the controller

1. Wipe with soft cloth after squeezing.

2. Allow to dry.



Remote control



About cleaning

- Before cleaning, unplug the electricity, DO NOT touch plug with wet hands.
- Make sure hands are dry when plugging to the socket.
- Failure to follow instructions may result in electric shock or burns.

Trouble	Possible reason	Troubleshooting
The massage chair does not power on.	Check if the control is on or not.	Open control switch.
	No massage function selected.	Choose massage function.
	Check whether the plug and socket are securely connected.	Make sure plug and socket are connected.
	Wire or plug has been damaged.	Please ask authorized retailer for service and repairs.
	The fuse burned out.	Replace fuse of same specification.
	Something is wrong with inner circuit.	Please ask an authorized retailer to check and repair.
Hear a beep sound inside massager while in use.	It is the sound of an air pump, motor or mechanical parts.	Normal sound, no need to pay attention to it.
Different height of the left roller and right roller.	Massage rollers work on shifts.	This is a normal occurrence.
Sound suddenly becomes much louder while working.	Check if it is due to extended runtime.	Turn off the power to let the massage chair rest for at least 30 minutes before the next use.
	Inner parts worn out due to extended usage is normal.	Please ask an authorized retailer to check and repair.
Massage function suddenly stops while working.	Suddenly powers down.	Check the power connection, remote, and the fuse.
	Preset massage time has been reached.	Turn off power to let the massage chair rest for at least 30 minutes before the next use.
Neither the backrest nor the legrest can be adjusted	Check if there are any obstacles; for safety reasons sometimes the massage chair may automatically stop working.	Remove the obstacles; turn off the power to let the massage chair rest for at least 30 minutes before next use.
The massage chair can't return to its original position.	Excessive operation - Preset massage time has been reached.	Please ask authorized retailer for service and repair.
Electric wire or plug gives out heat	It may be a work overload from excessive use.	Turn off the power to let the massage chair rest for at least 30 minutes before next use.
	Other abnormal case.	Stop using and ask authorized retailer for service and repairs.



Note: If you are experiencing an issue not notated above, please contact your authorized retailer for assistance.

Name	Jacuzzi® Massage Chair	Power	200W
Model	JPro704XR™	Weight Limit	300 lbs
Input Voltage	120V~ 60Hz - 15A	Total Weight	268 lbs
Safety Design	Class I	Dimensions	45in × 31in × 48in (L W H)

Limited Lifetime Jacuzzi® Massage Chair Warranty

- Warranties are limited to the original purchaser, for residential use, and cover defects in material and workmanship. Units in commercial use are excluded from any warranty coverage whatsoever.
- Frame and massage rollers have a limited lifetime warranty.
- Motors, boards, console, belts, and power supply have a 5-year replacement warranty.
- All other parts, including but not limited to, non-electrical/mechanical attachments including head cover, back pad, arm covers, wheel castors, seat cover, and footrest cover material are warranted against defects in material and workmanship as of the time of delivery only.
- Consumer should register their product immediately upon purchase at: <https://zenawakening.com/warranty-registration>, and keep original proof of purchase.
- See back cover for limitations and exclusions.

Consumer Warranty Limitations and Exclusions

- **IMPLIED WARRANTIES OF MERCHANTABILITY AND FITNESS FOR A PARTICULAR PURPOSE ARE DISCLAIMED ALTOGETHER OR TO THE FULLEST EXTENT ALLOWED BY LAW.** This limited warranty takes the place of all other warranties, express or implied, in fact or at law, including implied warranties of merchantability and fitness for a particular purpose. The coverages of this limited warranty are for defects in material or workmanship, and not damage caused by installation, unauthorized repairs or modifications, improper use of electrical/power supply, loss of power, dropped product, a malfunction or damage of an operating part from failure to provide manufacturer's recommended maintenance, transportation damage, theft, abuse, misuse, neglect, vandalism, environmental conditions (such as, fire, floods, rust, corrosion, sand, dirt, windstorm, hail, earthquake, or exposure to weather conditions), damage inflicted upon the massage chair by improper use, or accidental damage incurred by negligent use (i.e. surpassing the stated weight limit (300 lbs), remote damage from dropping on the ground, etc.). This limited warranty is void if the manufacturer or its designated representative determines that the massage chair has been subjected to damage or failure due to installation of aftermarket parts.
- **THE COMPANY WILL NOT BE RESPONSIBLE FOR INCIDENTAL OR CONSEQUENTIAL DAMAGES OR LOSSES ARISING FROM ANY CAUSE.** This exclusion applies even if the Company was advised in advance of the possibility of such damages. This limited warranty does not include labor, transportation, or other costs incurred in the removal and/or re-installation of the original unit and/or installation of a replacement unit; any costs relating to obtaining access for repair; or loss of use damage, including loss of sales, profit or business advantage of any kind under any circumstances. The liability of Company under this limited warranty, if any, shall not exceed the original amount paid for the product claimed to be defective. Dated proof of purchase is required for a warranty claim. These disclaimers shall be equally applicable to any service provided by the Company and its designated representatives.
- Warranties are non-transferable, are available only to the original purchaser, and shall be in lieu of any other warranty, express or implied, including but not limited to any implied warranty or merchantability or fitness for particular use. The sole liability of the manufacturer and distributor, Galaxy Health and Wellness, and the purchaser's exclusive remedy shall be for the repair, or at Galaxy Health and Wellness's option, for the replacement of the defective part. Notwithstanding the above, if replacement parts for defective materials are not available, the Company reserves the right to use replacement parts that may be different from the part(s) that accompanied the original massage chair, including but not limited to different in appearance, configuration, performance and/or structure, in lieu of repair or replacement.
- All Warranties begin on date of delivery. The Company is not responsible for any warranty representation or warranty implied by any third party, including but not limited to a selling dealer. There are no warranties applicable to Jacuzzi® Massage Chairs except as expressly stated herein or as implied by applicable state and federal laws. Jacuzzi® and its affiliates are not responsible for any warranty obligations. The only warranty is offered and administered by Galaxy Health and Wellness, and is for home applications only.
- The Company will repair or replace a defective part if the failure is of the nature or type covered by the warranty, the user informed the Company or its Representative of the nature of the problem during the warranty period, conclusive evidence is provided to the Company by the user proving that the failure occurred or was discovered within the warranty period, and the Company or its designated representative has been permitted to inspect the part and massage chair on which it was used during regular business hours within a reasonable time after the problem was reported by the user. In order to obtain warranty service, contact 1-866-234-7727. All replacement parts assume the remaining warranty period of the part(s) replaced. The Company's warranty obligation shall be discharged upon tender of replacement or repair. The customer's refusal to accept the tender terminates the Company's warranty obligation.
- The consumer may also have other rights that vary from state to state. Some states DO NOT allow limitations on how long an implied warranty lasts, disclaimer of certain warranties, or the exclusion or limitation of incidental or consequential damages, therefore some of the above limitations may not apply to the Consumer.