

Jacuzzi® Massage Chairs

JPro503XR™

Massage Chair User Manual



Please read SAFETY INSTRUCTIONS carefully before using the JPro503XR™

Key Features

1. Exhibits patented 2D massage rollers that glide seamlessly, navigating upward and downward motions, as well as moving gracefully from side to side, ensuring a thoroughly soothing massage experience for your back muscles.
2. Includes ShapeSense™ to detect the shape and size of your body for a customized massage experience.
3. Converts into GravityFree™ position with 1-button touch, which moves your feet above your head, allowing your body weight to be more evenly distributed, providing the ultimate in relaxation.
4. The Jacuzzi® Massage Chair slides forward in the frame with CompactGlide™ before reclining, which requires only 3(three) inches of clearance behind the massage chair.
5. CalfRelief™ delivers an air pressure massage to tired calf muscles and SoleRefresh™, provides an energizing and kneading massage that targets the nerve endings at the bottom of your feet.
6. HipSculpt™ provides an air compression massage that targets the waist, thighs and glutes.
7. PalmSoothe™ provides an air pressure massage from your fingertips to your elbow; targeting areas prone to carpal tunnel and arthritis.
8. LegExtender™ Pro extends legrest up to 9(nine) inches offering optimal comfort even for taller users.
9. Includes convenient full-color LCD remote control for ease of use.
10. FlexRelief™ relieves pressure in your spine and joints.

Note:

Jacuzzi® Massage Chairs and their partners may make product modifications and enhancements. Specifications may change without notice. International products may be configured differently to meet local electrical requirements. Dimensions are approximate. Manufactured under one or more United States patent numbers Other patents may apply.

Table of Contents



Reference	Safety Precautions 1 External Structure Parts 5 Internal Structure Parts 6 Mechanical Components Diagram 7 Mechanical Components List 8
Setup	Installation 7 Before Massage Operation 13
Massage Chair Operation	Remote Control 15 Operating Instructions 19 Massage Chair Functions 20 Powering Down 21
Maintenance	Cleaning the Massage Chair 22
Additional Information	Troubleshooting 23 Technical data 24 Warranty 24

Thank you for choosing Jacuzzi® JPro503XR™.
 Please read this manual carefully before using the massage chair.
 Please keep this manual in a safe place for future reference.

1 Safety Precautions

Reference

- Please read this manual carefully to make sure the installation and operation of the Jacuzzi® Massage Chair is correct.
- Safety Precautions, which include both warnings and cautions, are important for your safety. Please read before operating the massage chair.

 Warning	This sign indicates warning of causing injury or death.
 Caution	This sign indicates caution of causing possible injuries or damages.

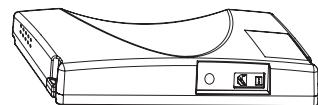
Warning

This product may not be suitable for users who experience increased discomfort, risk of accident, or bodily harm. Users with the following conditions should consult their doctor before use.

- Osteoporosis, vertebral fractures, and acute painful diseases such as sprains or muscle strains.
- Pacemakers or other implanted medical devices - The vibrations and electromagnetic fields from massage chairs could interfere with medical devices.
- Cancer - Massaging directly over tumors is not recommended. Check with a doctor first.
- Perceptual disorders due to high levels of peripheral circulatory disturbances such as diabetes.
- Protruded invertebrate discs.
- Pregnant women and those who have recently given birth, as well as people with poor health.
- Sensitivities or allergies to heat.
- Users that have been diagnosed with narcolepsy.
- Sensory loss - Those with reduced sensation may not realize if the massage pressure is uncomfortably high.
- Those under the influence of drugs, alcohol or medication that causes drowsiness - Impaired users have a greater risk of falls or improper use.
- Children under the age of 14 - Massage chairs are designed for adults and can overextend children's muscles and joints.

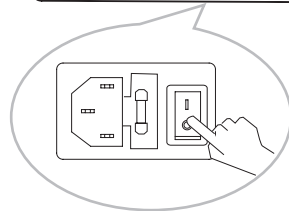
Grounding instructions

The massage chair is equipped with a cord that has a grounding conductor. The plug must be plugged into an appropriate socket that is properly installed and matched with the plug. Always use a surge protector.



Replacing the fuse

If the fuse is burned out, turn off the on/off switch and unplug the power from the wall outlet. Open the lid covering the fuse which is located in the switch box. Make sure the replacement fuse is the same size as the current burnt out fuse. Contact an electrician if you need assistance.



Safety Precautions

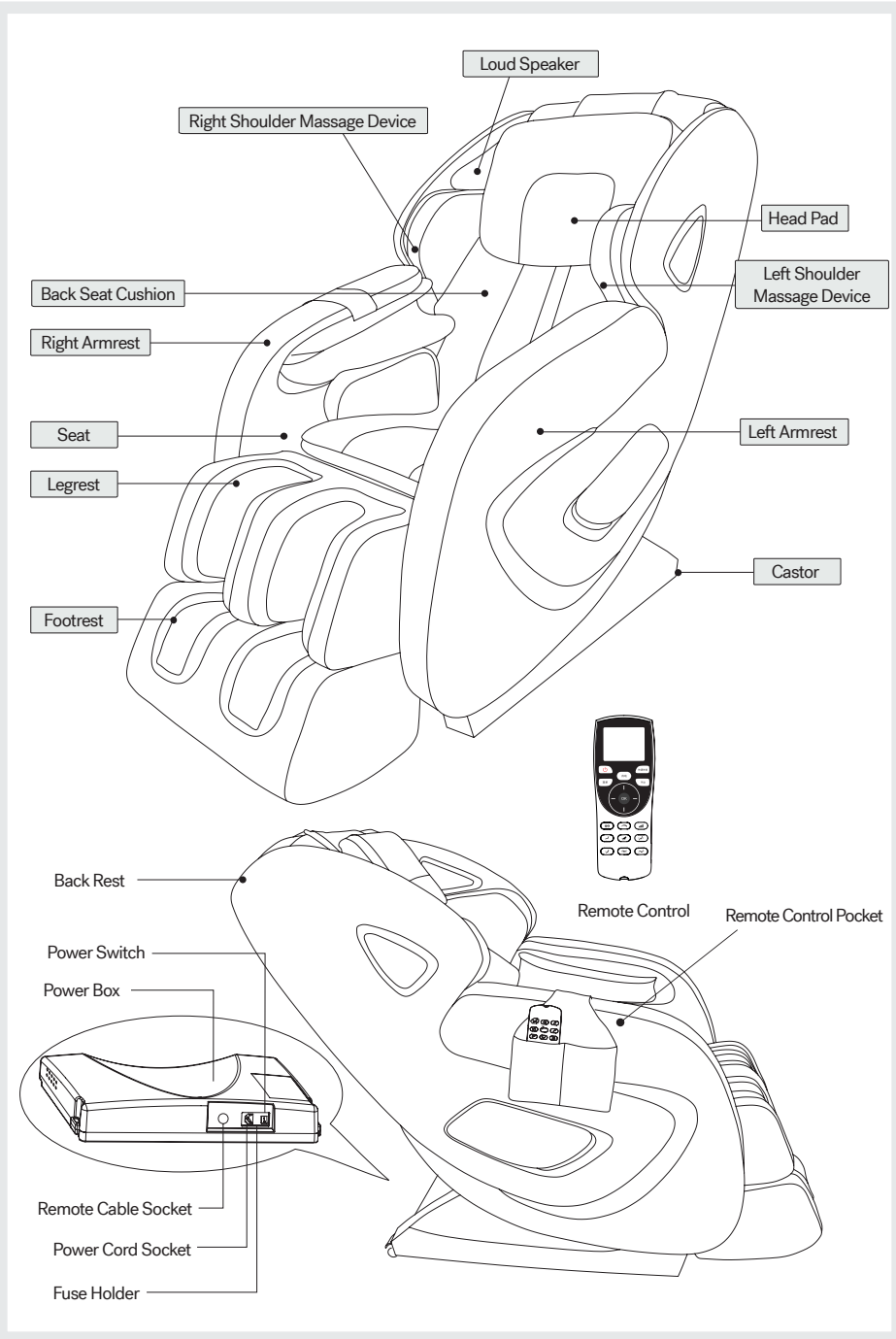
Reference

Warning

Accident or Injury	<ul style="list-style-type: none"> • Before operating the Jacuzzi® Massage Chair, please make sure to check the area around the massage chair for any obstructions. • When using the backrest, calf up & down, or calf extend, be sure to check that there is no interference or objects in the area (behind, under, or in front of the massage chair). • In the event of a physical abnormality or abnormality in use, stop using the massage chair immediately and ask a doctor. • Use caution when massaging around sensitive areas like the head and neck. Pay close attention to the movement of the massage rollers and avoid over-massaging or applying too much pressure. • DO NOT massage the abdomen or knees with this machine. • If you want to leave your seat during the massage, you must stop the massage chair before you leave the seat. • DO NOT use the massage chair with other instruments. • DO NOT allow children or pets to play on or around the massage chair (especially while in use.) • DO NOT sit or stand on the backrest, armrests or legrests. • Users requiring assistance should be accompanied by a parent, guardian, or aide for safety. • Before moving the massage chair, the backrest and legrest must be angled back to their original position. • DO NOT fold cushions for storage. • DO NOT operate the massage chair without the user properly seated and positioned in the massage chair. • DO NOT fall asleep in the massage chair.
Fire and Electric Shock	<ul style="list-style-type: none"> • When assembling, make sure the massage chair is unplugged and the power is off. • Insert the electrical plug from the massage chair into a compatible power outlet. Make sure the plug is completely inserted into the socket to reduce short circuit or fire risk. • Always unplug the power cord when not in use. Be sure to turn off all massage chair functions by pressing the on/off switch first before unplugging. • Power cord, plug, and socket can't be used in broken or loose contact condition. • DO NOT use other electric power except rated voltage in case of fire, electric shock or any breakdown. • DO NOT use power cord or operate the massage chair if the cord or plug has been damaged, frayed, knotted, twisted or crushed. • DO NOT use if the massage chair is wet or if the user is wet. • DO NOT use the massage chair outdoors. • DO NOT use the massage chair in areas where the humidity is high such as a sauna or steam room. • Keep the power cord away from heated surfaces. • Never plug/unplug the power cord plug socket with wet hands. • Always unplug the massage chair from the electrical outlet immediately after using and before cleaning. DO NOT leave the chair unattended while plugged in.
Disassembly and Maintenance	<ul style="list-style-type: none"> • If the massage chair becomes dysfunctional, defective, or wet, contact your authorized retailer or send the massage chair to the assigned service agent. Self-modification, disassembly or maintenance is forbidden. • If power cord or plug is damaged, please DO NOT replace it yourself, please contact your authorized retailer for replacement. • To avoid electric shock or bodily harm, please DO NOT open or disassemble any part of the massage chair; there are no user-serviceable parts. • Check leather or cloth material on the back and other areas to see if they are broken or not. If broken, even if it seems to be a minor issue, please stop using the massage chair, unplug the power and have it repaired.

3 External Structure Parts

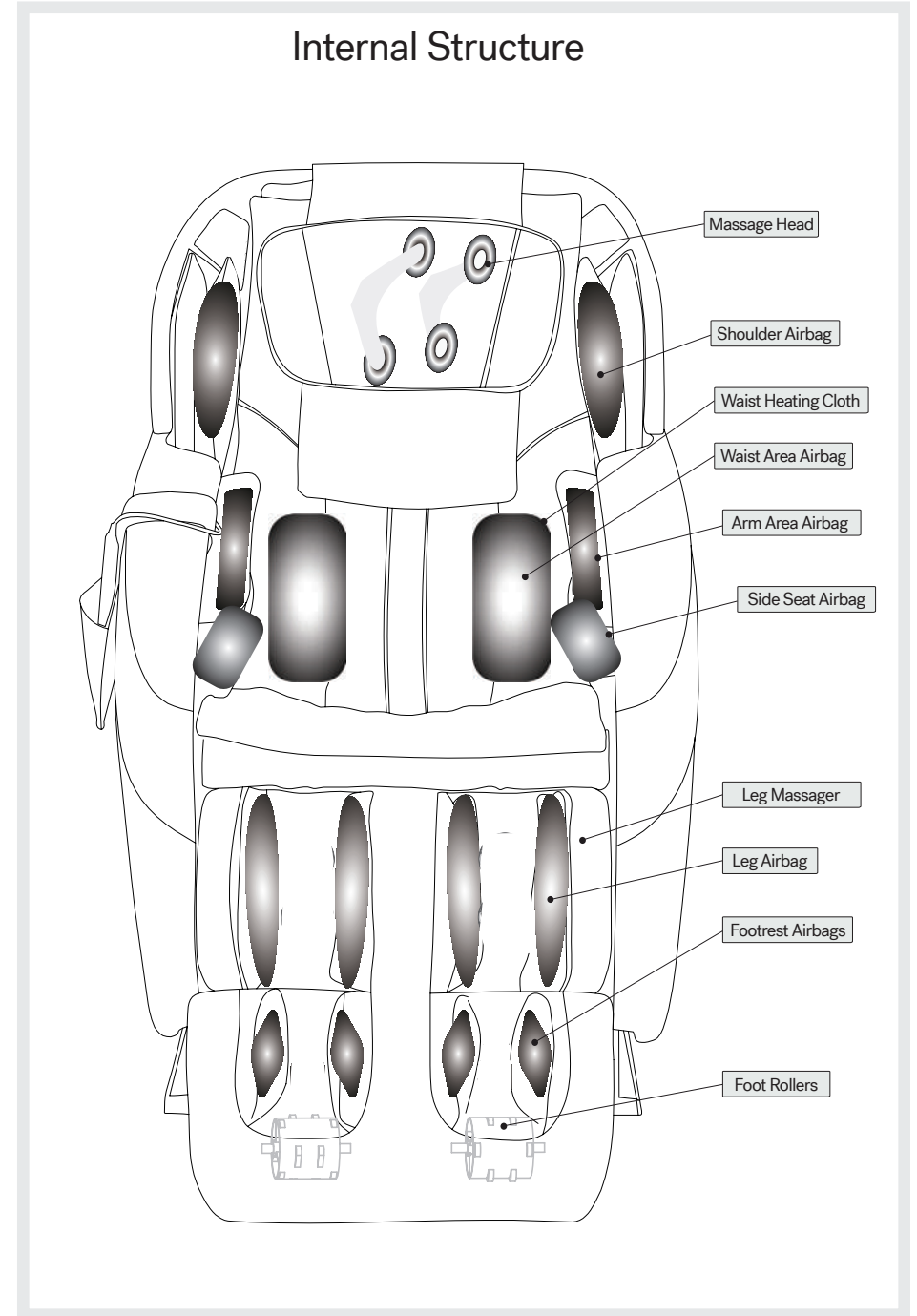
Reference



Internal Structure Parts

Reference

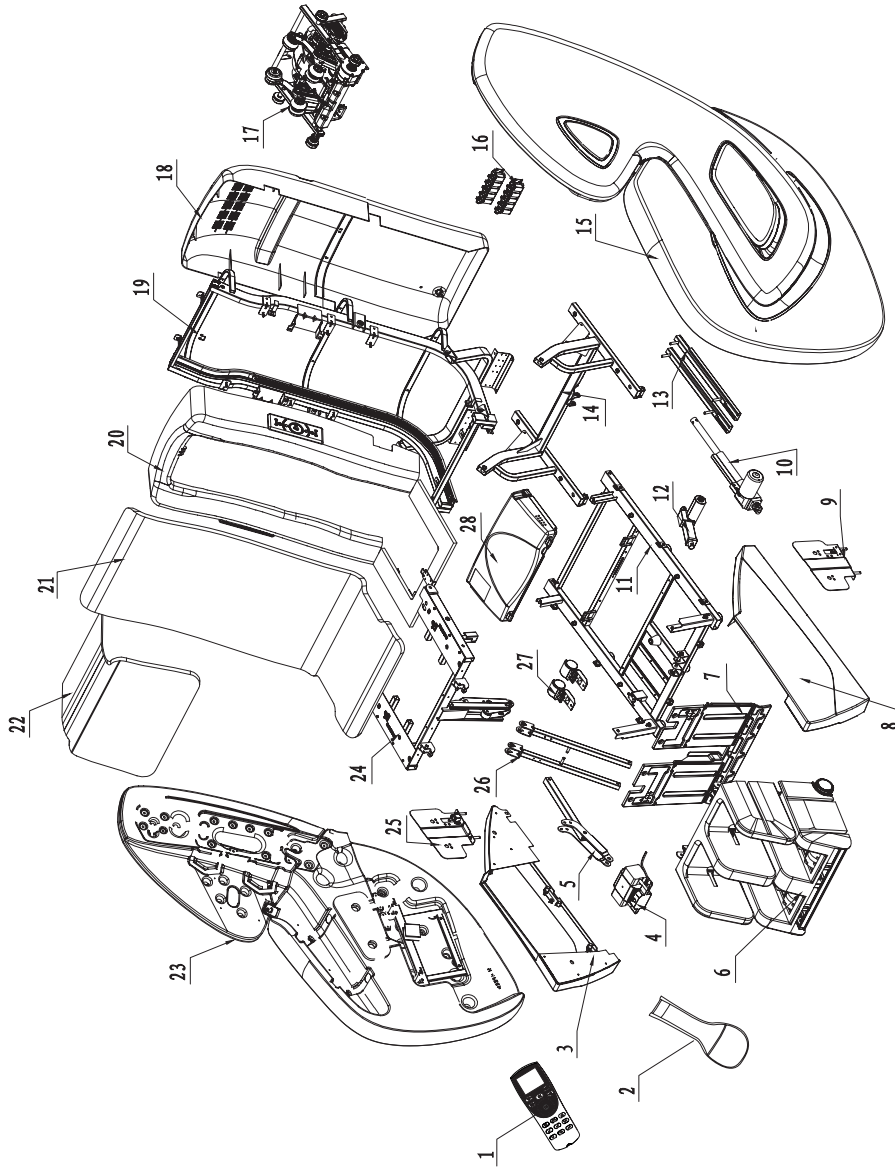
4



5 Mechanical Components Diagram

Reference

Explosion Diagram



Mechanical Components List

Reference

6

Part		Qty	Part		Qty
1	Remote Control	1	23	Right Armrest Assembly	1
2	Remote Control Pocket	1	24	Seat Frame Surface Assembly	1
3	Right Side Fender	1	25	Right Seat Airbag Assembly	1
4	Air Pump Assembly	2	26	Seat Support Bar	2
5	Connecting Rod	1	27	Castor	2
6	Legrest & Footrest	1	28	Power Case Assembly	1
7	Front Fender	1			
8	Left Side Fender	1			
9	Left Seat Airbag Assembly	1			
10	Backrest Electric Actuator	1			
11	Bottom Seat Frame Assembly	1			
12	Footrest Electric Actuator	1			
13	Sliding Rail	2			
14	Top Seat Frame Assembly	1			
15	Left Armrest Assembly	1			
16	Electric Magnetic Valve	2			
17	Massage Machine	1			
18	Back Cover Assembly	1			
19	Back Frame Assembly	1			
20	Backrest And Seat Assembly	1			
21	Back And Seat Cushion	1			
22	Pillow	1			

7 Installation (1)

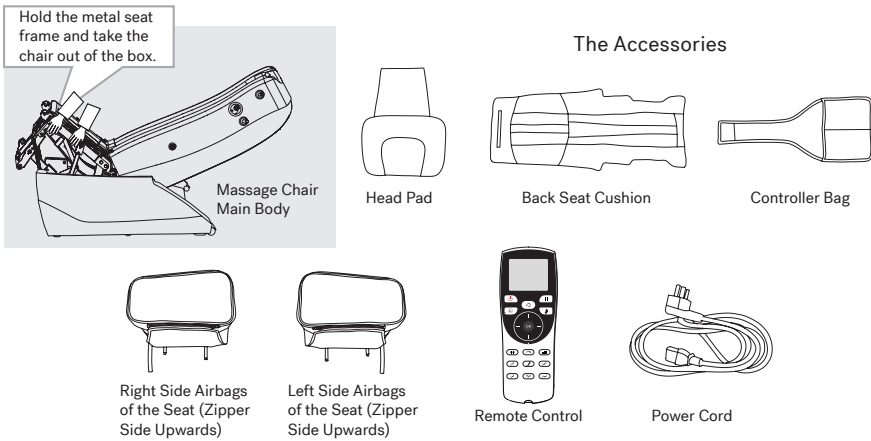
Setup

Scan the QR code to follow along with a video assembly of the JPro503XR™.



Step 1. Remove the massage chair from the box.

1. Remove the accessories and main chair from the box (Using two people)
2. Confirm all of the accessories are accounted for.



For steps 3 and 4 please reference the QR code to the assembly video.

3. Take out the left and right armrest from the armrest box, put the armrest on the table or ground and lay flat carefully to prevent scratches.

4. Taking out the legrest device from the Legrest box, catching the front and back two sides of the legrest and remove from box.

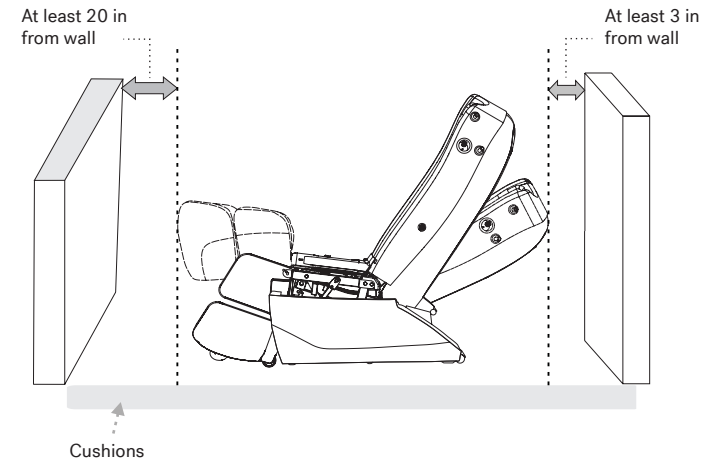
Installation (2)

Setup

8

Step 3. Check for adequate space.

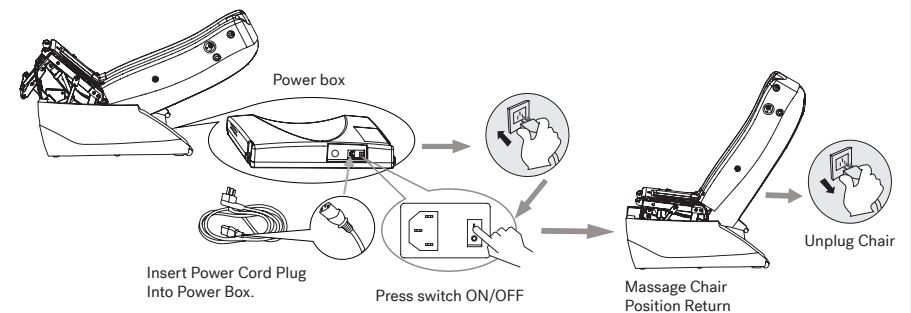
Ensure there is enough space behind the massage chair to allow for it to recline



Consider using a rug or floor pad to avoid damage to floor.

Step 4. Massage Chair Position Return

1. Insert one end of power cord into the socket on power box, insert the other end into outlet.
2. Switch the power ON and the backrest will go up and the seat will go down.
3. After the backrest returns to the normal position, turn off the power and unplug the massage chair from the wall.



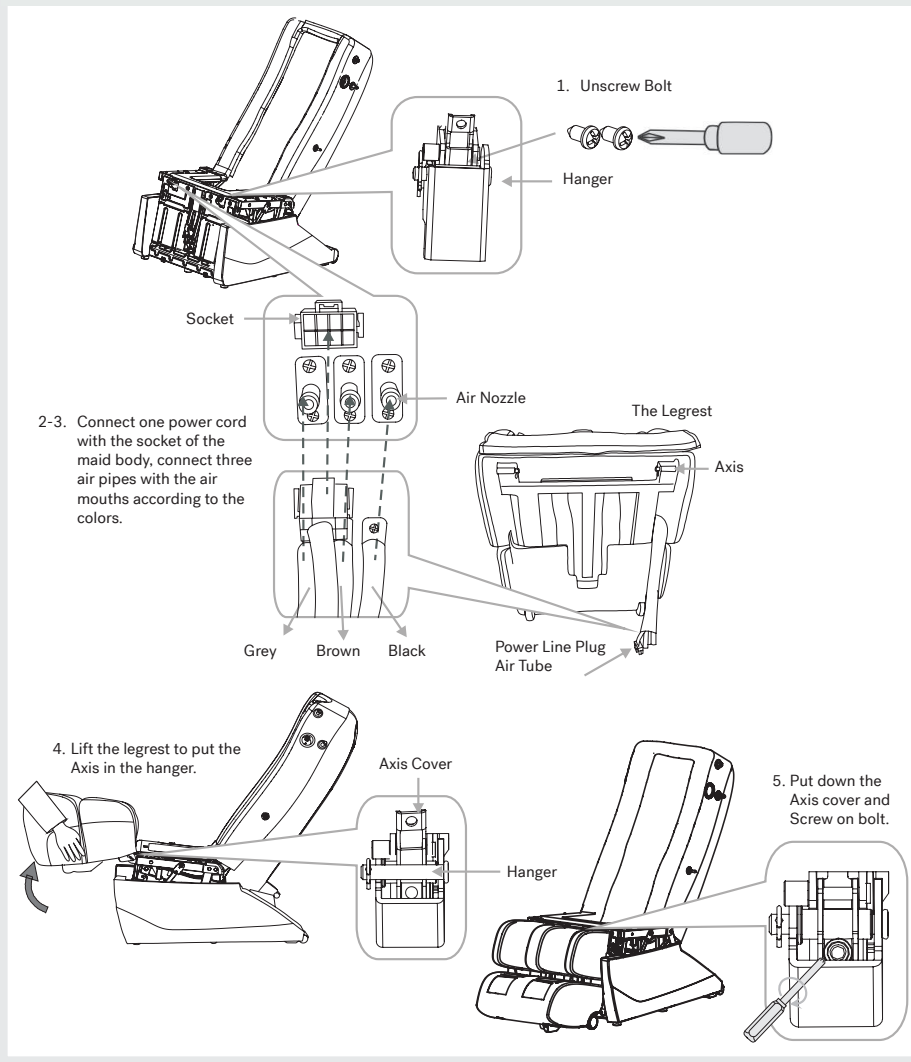
9 Installation (3)

Setup

Step 5. Assemble the legrest

1. Unscrew the bolt from the hanger on the legrest.
2. Connect the 3 air pipes on the legrest with the air tap on the main body by color.
3. Connect the power line tightly to the power socket.
4. Raise the rotation shaft board on hangers, raise the legrest with your hands, put rotation shaft into hangers on main body, and put the rotation shaft board down.
5. Screw back tightly.

⚠ Caution: Make sure the air tube and wires cannot twist together.



Installation (4)

Setup

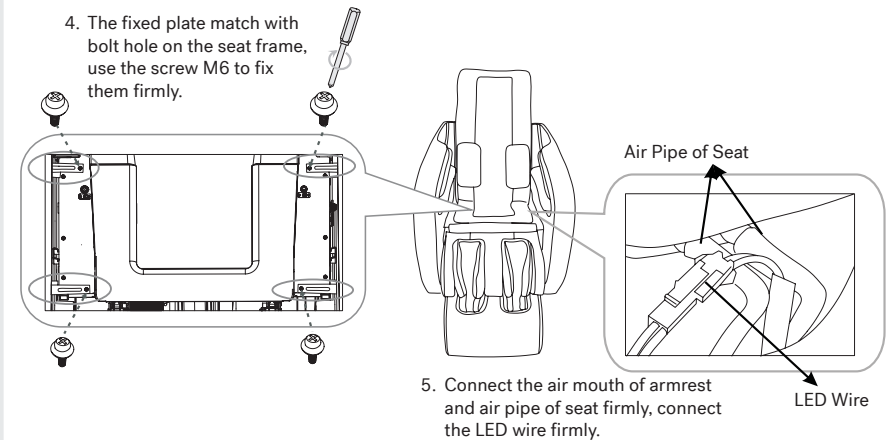
10

Step 6. Assembling the Left and Right Armrests.

1. Using a Phillips-head screwdriver, unscrew the M6 bolts on the seat frame.
2. Lift the shoulder and armrest and place the shoulder massage assembly inside near the backrest side. Insert the fixed axle 1 into fixed hole 1 on the backrest side and adjust the shoulder to the correct position.
3. Connect the wire from the shoulder part to the socket on the side of the backrest.
4. Align fixed hole 2 on the top of the shoulder part with fixed axle 2 on the top of the backrest.
5. Align the two fixed hole 3s on the shoulder with the two fixed axle 3s on the side of the backrest.
6. Insert the fixed axles mentioned above into the fixed holes and ensure they are in the correct position. Move the shoulder and armrest downwards and insert the square tube on the armrest into the plate on the frame side of the seat. Lock it in place.
7. Align the front and back panel on the armrest with the bolt hole on the seat frame and screw the M6 screws tightly.
8. Connect the air hose from the armrest to the air hose from the seat.
9. Connect the LED wire from the armrest to the LED wire from the seat.

⚠ Caution: Avoid Squeezing the air tube when assembling.

Scan the QR code to follow along with the video for step #6.



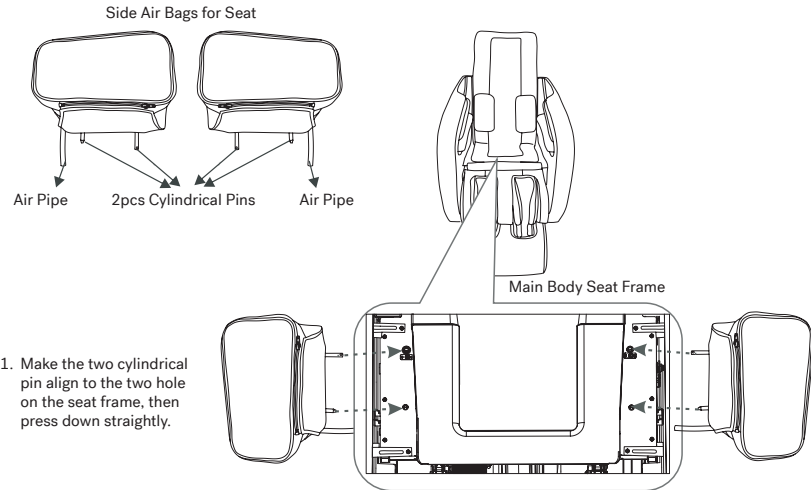
To Disassemble: Disconnect the air pipes between the seat and armrest, unscrew the four screws on the seat, lift up the front of armrest, let the square tube of armrest move out from the plate of seat frame; then press the button on the fixed hole located inside the back of the armrest and pull the end of armrest at same time, move the fixed hole away from the fixed bolt located on the side of backrest, then finish disassembling.

11 Installation (5)

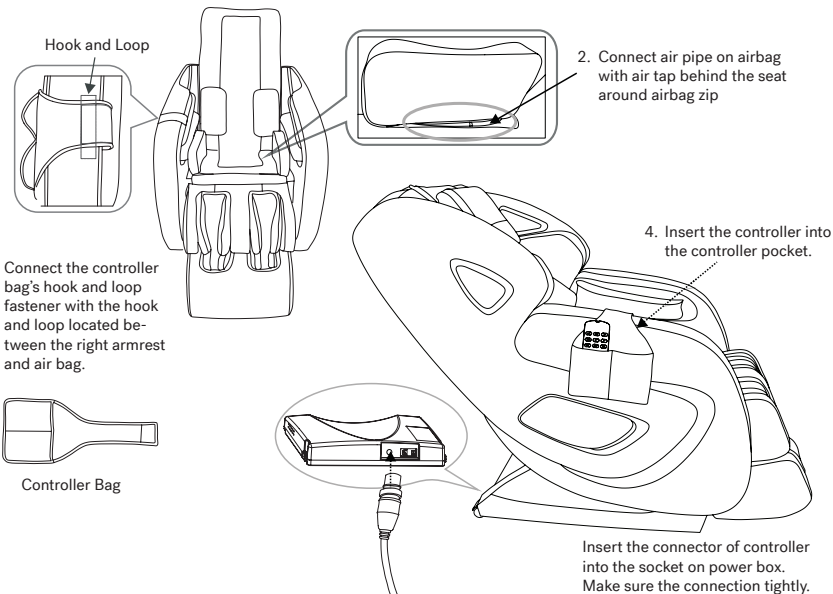
Setup

Step 7. Install Left and Right Airbags and Remote Control

1. Make the two cylindrical pin align to the two hole on the seat frame, then press down straightly,
2. Connect air pipe on airbag with air tap behind the seat around airbag zip, make sure it is tight.
3. Connect the controller bag's hook and loop fastener with the hook and loop located between the right armrest and air bag.
4. Insert the controller into the controller pocket on the inner side of right armrest, insert the connector of controller into the socket on power box. Make sure the nut cap is tight.



1. Make the two cylindrical pin align to the two hole on the seat frame, then press down straightly.



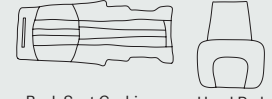
Insert the connector of controller into the socket on power box. Make sure the connection tightly.

Installation (6)

Setup 12

Step 8. Connect The Zipper or Fastener.

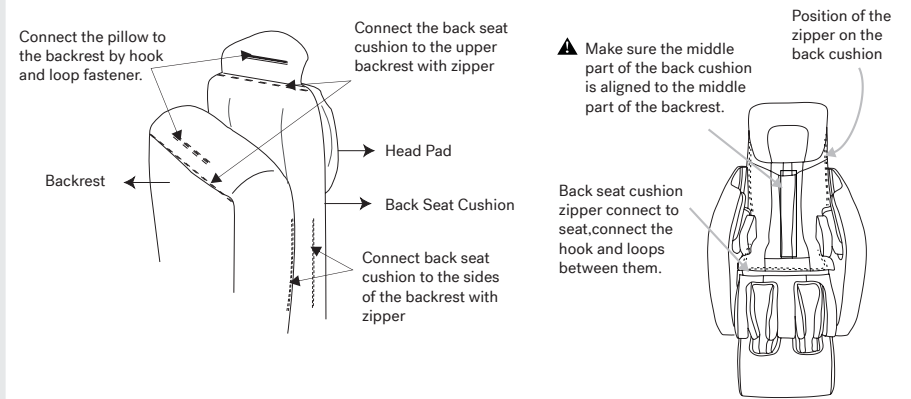
Put the back seat cushion, head pad onto the backrest and connect the two parts with zipper and hook and loop.



Back Seat Cushion Head Pad

★ Warm Tips

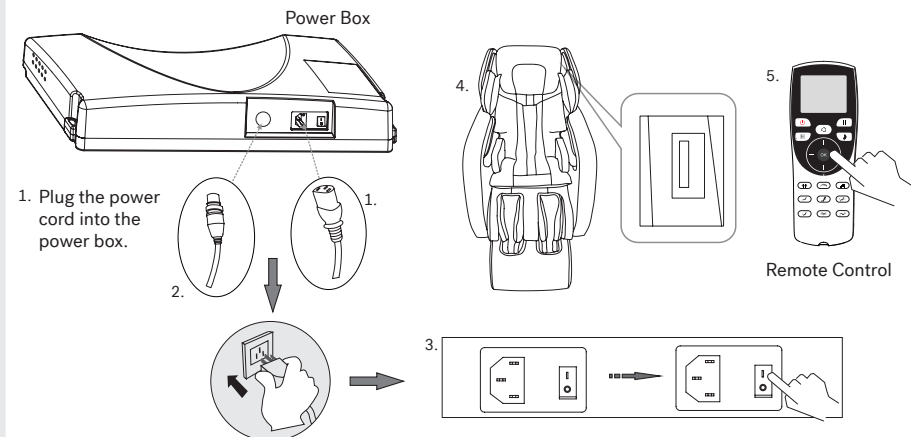
In order to get exact correct body test data for comfortable massage effect, when you sit on the massage chair, please make the bottom rim of the head pad flush with your ears before zippering the said two parts.



Step 9. Powering on the massage chair.

1. Plug the power cord in the hole a on the power box as shown in the right picture.
2. Insert the plug end of the power cord into the electrical outlet.
3. Turn on the switch behind the power box. (Switch on/off "O/I", press I down to turn it on.)
4. Insert U-Disk into USB slot on the left shoulder to play music
5. Use the remote to select a massage program, and enjoy!

Make sure the switch is off before you insert the plug of power cord into the socket.



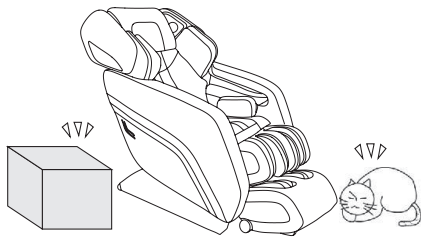
13 Before Massage Operation

Setup

Refer to this page before using your Jacuzzi® Massage Chair.

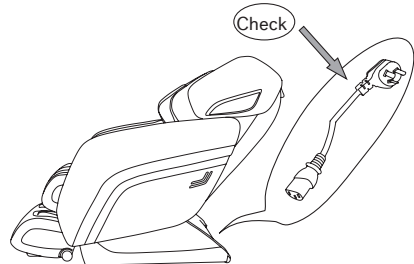
1. Check space in front

Check the areas when the back and legs extend to make sure there are no obstructions.



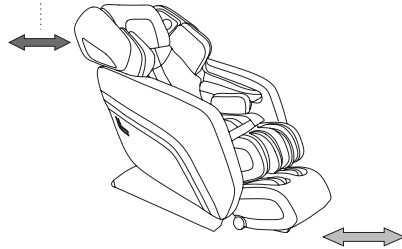
2. Check power cord and plug.

• Ensure plug is clean, dry and free of dust. DO NOT bend or apply pressure to plug.



3. Space needed for operation.

• At least 3" inches from the wall behind.

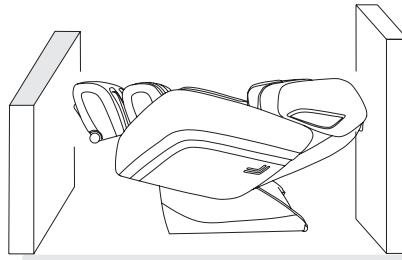
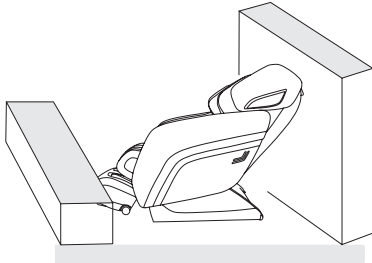


• At least 20" inches in front of the legrest.

4. Check surroundings

• When the backrest or legrest reclines or extends, please make sure to:

1. Check for obstructions in front of and behind the massage chair.
2. Ensure there is 3 in of space behind and 20 in of space in front of the massage chair



Before Massage Operation

Setup

Moving the massage chair.



Caution
DO NOT move the massage chair when it's working in case of accidents or damage

Prepare the massage chair

- Bind the cables and put them in the seat to avoid damage when moving.
- Avoid bumping the massage chair with your body or with another object. This could damage the internal mechanisms of the massage chair.
- DO NOT use the castor if the floor is easily damaged. The massage chair will need to be lifted.
- Using your bodyweight, push down on the back of the massage chair in order to raise it onto its castors. Then, slowly guide it to the desired location.



Lean the massage chair back so it's resting on the castors. Push the massage chair on the back castors to the desired destination, then slowly release the massage chair until it's completely resting on the floor.



No More Than 40 Degrees Castors

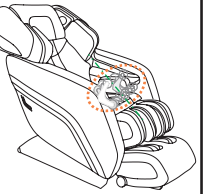
Please hold the footrest to move the massage chair as shown in the picture in case any scratches on the leatherette



Note: the armrest does not move when the back of the massage chair is reclining.

ShapeSense™ Setup

1. Make sure the massage rollers stop in the upper part of the backrest, then sit on the massage chair slowly to avoid injury caused by the massage head being in the wrong position.



2. When setting up ShapeSense™, if the massage head can not find the shoulder position, it will default to the middle position.

3. Correct position: Your back should rest on the back of the chair, with your head resting on the pillow.

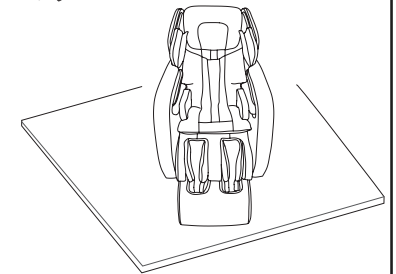


• Sit up straight with good posture to prevent incorrect ShapeSense™ detection which could cause discomfort.

• You will hear a "beep" once ShapeSense™ is complete. If you need further adjustment of rollers, press the up or down key on the remote.

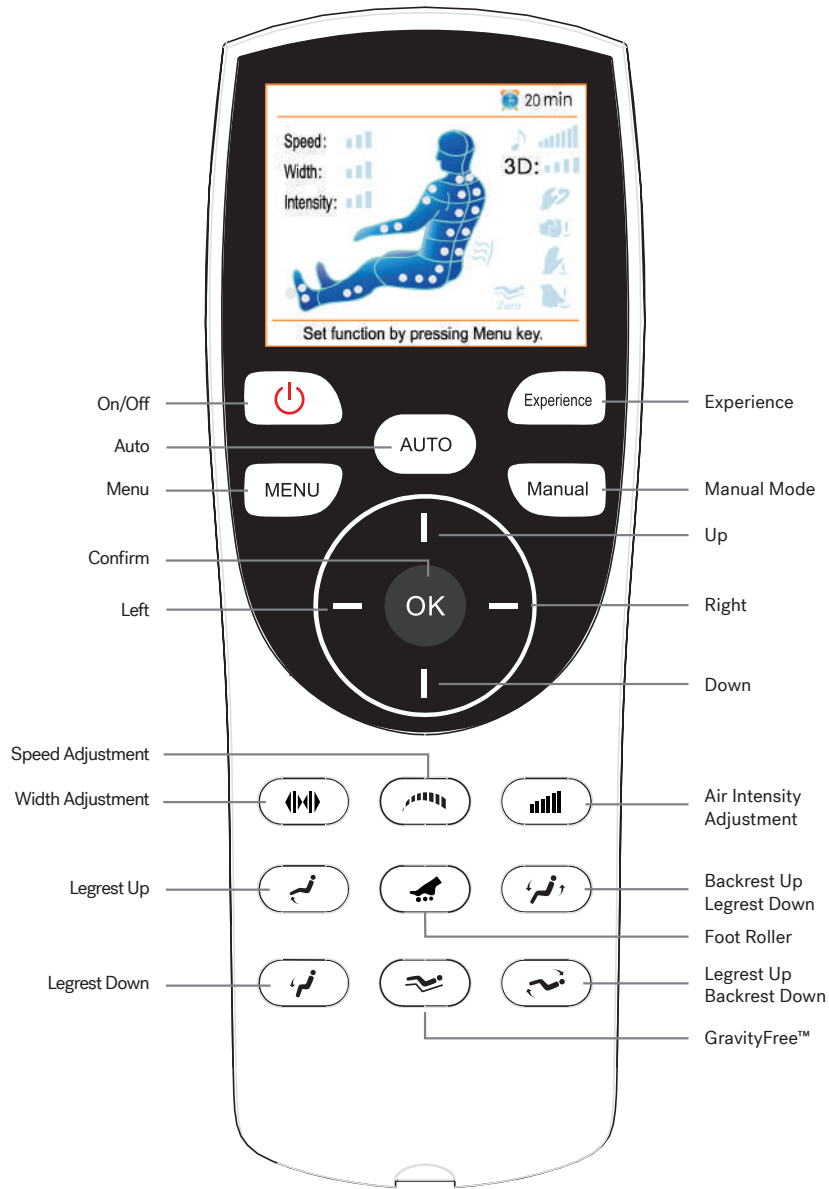



• You can remove the pillow to increase massage pressure.




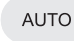
• Place the massage chair on a rug, blanket, or other soft floor covering to prevent marks or scuffs on floor.


Manual Control

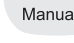



- 


1. In standby status, press on/off key to start the massage chair. Now by menu or other key to select any auto or manual massage program, the massage machine will first detect shoulder height and then begin massage. In on status, press on/off key, massage chair shall turn off and return to original position by leg-rest staying at the lowest and back-rest moving to the highest position. Control panel turns off in 3-5secs.
- 


2. In on mode, press this key to pause the current action, press it again to continue with the massage.
- 


3. In on status, press this key to switch an auto mode each time. Five auto programs for you choice: Recovery, Pain Relief, Stretch, Music Sync and Experience. After that, it's Stop mode. Relative screen display is shown on the control.
- 


4. Press this key in main interface to switch to menu interface, user can set different massage functions. Press it in Menu interface to return to main interface.
- 


5. In on status, press it to turn on or turn off music. In ON status, when the mobile connect to massage chair via blue-tooth, the blue-tooth icon is bright. Press this key to answer or end the calls.
- 


6. Direction button has four, they are Up, Down, Left and Right. In Menu interface, it is navigation key, user can press Up or Down to choose menu fast, and press Left or Right to enter previous or next menu. What's more, Up and Down button can be used to adjust massage position in shoulder height detection and point massage. In music operation, Left and Right button control previous and next song choice. Up and Down button control volume adjustment. Volume grows one bar every two press.
- 


7. In ON status and under Menu Mode, press it to confirm menu choice and enter next menu.
- 


8. In ON status, press it to adjust width between wide, medium and narrow. Massage Width can only be adjusted in manual mode except the Kneading or Kneading and Knocking technique.
- 


9. In ON status, press it to adjust speed between level one, two and three. Massage speed can only be adjusted in manual mode except finger press technique.
- 


10. In ON status, press it to adjust air massage intensity between level one, two and three. The intensity can be adjusted in auto mode and air mode.
- 

11. Press and hold this button and the leg-rest goes up. Release it, leg-rest stops moving. Controller will show position adjusting ... when adjusting the position of massage chair.
- 

12. In On mode, press it to adjust the speed of foot rollers between fast, slow and switch off. Or press it to turn on or turn off Calf rubbing function between on, and off.
- 

13. Press and hold this button and the back-rest goes up and leg-rest goes down. Release it, both back-rest and leg-rest stop moving. Controller will show position adjusting ... when adjusting the position of massage chair.
- 

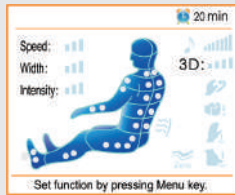
14. Press and hold this button and the leg-rest goes down. Release it, leg-rest stops moving. Controller will show position adjusting ... when adjusting the position of massage chair.
- 

15. In On status, press this key, massage chair will enter zero gravity position. Press it again to return to default position. GravityFree™ image on the main interface will show the current GravityFree™ setting after the massage begins.
- 

16. Press and hold this button and the back-rest goes down and leg-rest goes up. Release it, both back-rest and leg-rest stop moving. The controller will show position adjusting ... when adjusting the position of massage chair.

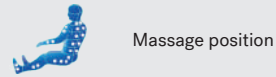
LCD Display Graphic Description

Menu Main Interface



Press "on/off" button when power is on, a buzzer beeps once short and brittle. LCD screen display boot screen, after 2-3 seconds it displays the main interface and enter standby mode. Main interface show massage position, method, time, current massage status etc., all information will be updated timely when the massage chair start working.

- Massage function
- Kneading
 - Tapping
 - Knocking
 - Pressing
 - Zero gravity
 - Massage time left

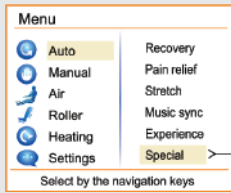


- Massage speed (slow, mid, fast)
- Massage width (narrow, mid, wide)
- Air intensity (weak, mid, strong)
- 3D strength (4 levels)

Heating

Music

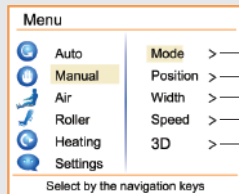
Menu Interface



Press the "menu" button in the main interface, it will switch to the menu interface, user can set all massage function. Press the "menu" button in the menu interface will exit and return to the main menu interface.

Auto massage: Press menu button, the cursor defaulted to stay on the automatic massage program menu. Then press the "OK" button to enter automatic mode: Recovery, Pain relief, Stretch, Music Sync, Experience and Special. The special massage including five automatic massage programs.

- White-collar
- Shopaholic
- Back Yoga
- Athlete mode
- Care of aged



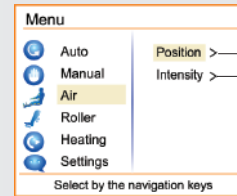
- Mode: Knead, Tap
- Position: Overall, Partial, Fixed point, Shiatsu
- Width: Narrow, Middle, Wide
- Speed: Low, Middle, High
- 3D: 3D+, Middle, 3D-, High

Manual massage: Press "menu" button, select manual massage by the navigation key, press the "OK" button, there are five options such as mode, position, width adjustment, speed adjustment, 3D, select the corresponding function then press the "OK" button to enter the next menu, select the desired massage method, position, width, speed and 3D regulating function. When massage chair in manual fixed point work modes, users can use up/down button to adjust massage position, information for "massage position adjusting..." will be show at the bottom of the display screen.

Note:

- When choosing massage manipulation the default position for the whole massage, only once shoulder height detecting.
- Part and fixed point massage DO NOT need shoulder height detecting, in the process of shoulder height detection (the shoulder height detection not end) switch to the part and fixed point will stop the shoulder height detecting into the corresponding function., then if switch back to the whole massage or other method again, the shoulder height, detecting will test again.

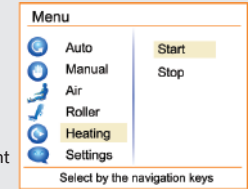
LCD Display Graphic Description



- Position: Overall, Upper, Middle, Lower
- Intensity: Low, Middle, High

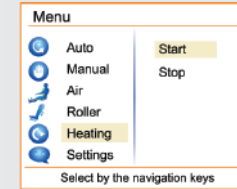
Air : After press MENU button, choose "air pressure" through navigation key,press "OK"button,there are two kinds of air pressure related function: Position and Intensity;Choose the corresponding function, then press "OK"to enter next menu and choose required function.

Roller : press"menu" button on the remote choose" roller"button you will see there are three options as "quick", "Soft" and "Stop".



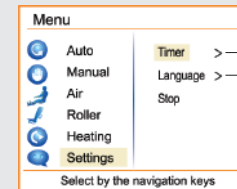
Note:

- In all Auto massage mode,foot roller massage defaults "ON", if you don't want foot roller massage ,Please press "Stop"button which is list in the foot roller function menu.
- During "full body"and " legrest &footrest"air pressure,foot roller massage defaults "ON",if you don't want foot roller massage,please press "Stop"button which is list in the foot roller function menu.
- During "Hand and shoulders" and "Waist and seat"air pressure massage,foot roller massage defaults "OFF",if you want foot roller massage,please press "Quick"or "Soft"button which is list in the foot roller function menu.



Heating: Press "Menu" button, choose "heating" through navigation key,there are following methods can be adjusted, the waist and massage mechanism heating function opened at the same time,the waist and massage mechanism heating function closed at the same time. When heating is ON, heating signal will flash on the screen.

Setting: Press "Menu" button, choose "Setting", then choose "Timer""Language" and "Stop"button.



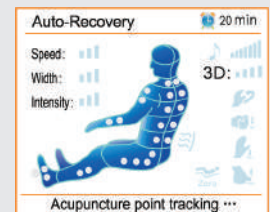
- Timer: 10 min, 20 min, 30 min
- Language: 简体中文, English, 한국어

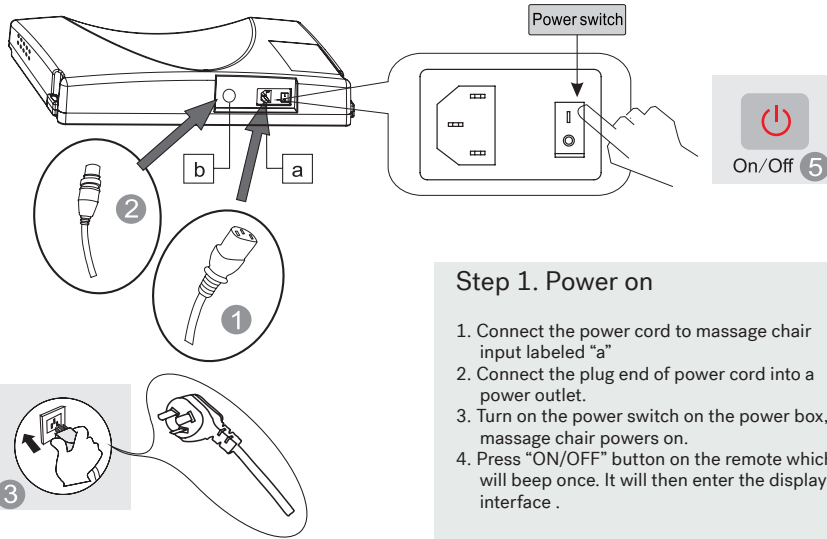
Timer: Choose setting massage time "10min", "20min" or "30min", When time is up. Power will be turned off automatically.

Language: Simplified Chinese,English and Korea language are available.

Stop: Press this button to stop all massage function.

After Power is on, the first time to use auto program, massage chair will start acupuncture point position detecting, and "acupuncture point tracking ..." will be shown on screen display. After acupuncture point tracking detecting is finished, buzzer will tick 5 times (once every second), meanwhile, the massage machine is located in shoulders position, if user think the position is not proper, press Up and Down to adjust, when adjusting, "acupuncture point adjusting..." is showing on screen display. Default working time is 20 minutes. (Massage chair will turn off and return after the massage is over)





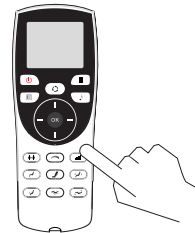
Step 1. Power on

1. Connect the power cord to massage chair input labeled "a"
2. Connect the plug end of power cord into a power outlet.
3. Turn on the power switch on the power box, massage chair powers on.
4. Press "ON/OFF" button on the remote which will beep once. It will then enter the display interface .

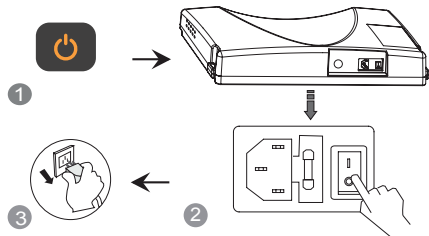
Step 2. Massage

1. Operate according to controller operation instructions. As for the massage method's details, please refer to remote control's Usage page.
2. When the massage ends, the massage chair will return to the default position, meanwhile "Shutting down" will be displayed on the controller.

Remote Control



Step 3. Turn off the power



1. When the massage chair is On, press On/Off button to turn off the massage chair and it will restore automatically.
2. Turn off the power switch on the bottom of the back of chair after the rollers reach the storage position.
3. Unplug the power plug from the socket.



Warning

1. Before using, pull up the pillow, back cushion etc. to check if the PU material is broken, if there is damage, please stop using, unplug the massage chair, and ask for repairs.
2. Only plug to proper socket.



Attention

- Before sitting down, make sure there is nothing pinched between armrest, legrest, backrest and seat of the massage chair.
- Make sure the massage chair is in reset state before using.
- DO NOT stand on it when using the massage chair.

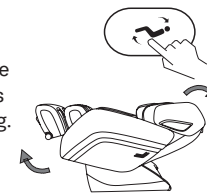
- **Legrest Up**
Press this button on controller to raise the legrest. Release the button to stop moving.



- **Legrest Down**
Press this button on the controller to lower the legrest. Release the button to stop moving.



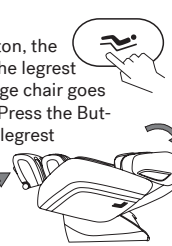
- **Backrest Down**
Press this button on controller, to lower the backrest. Release this button to stop moving.



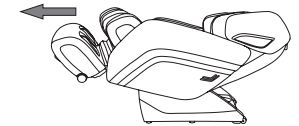
- **Backrest Up**
Press this button on controller to raise the backrest. Release this button to stop moving.



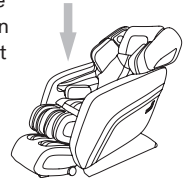
- **GravityFree™**
Press the "GravityFree" button, the backrest will go down and the legrest will raise up, and the massage chair goes into GravityFree™ position. Press the Button again, the backrest and legrest will stop moving. However, you can change the angles to keep a comfortable position all the time.



- **LegExtender™**
Legrest can extend or retract up to 9 inches.



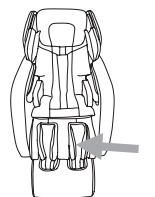
- **PalmSoothe™**
The armrest has built-in pulse pressure massage function, put your arm in the air bag when it is not inflating. It will slowly inflate, and massage your arm and hands.



- **PressureRelief™**
An air pressure massage that can help alleviate the stress and strain in shoulders tired from daily activities.



- **SoleRefresh™**
SoleRefresh™ delivers a foot roller massage.

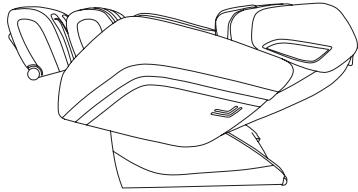


- **CalfRelief™**
CalfRelief™ provides a calf air compression massage.

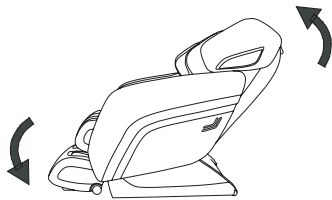
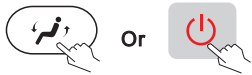


1. Please make sure the area is clear to avoid unexpected injuries or property loss.
2. When adjusting the backrest, be careful of the gap between the backrest and armrest.
3. When the legrest is moving, please DO NOT stand on or leave from the seat, DO NOT stop the legrest from moving in case of causing damage to the massage chair.
4. Please refer to control instruction for more details.

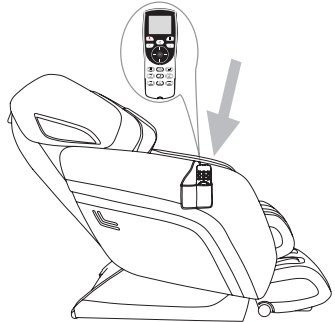
- 1 When returning the massage chair to the upright position, make sure there are no obstructions under the legrest.



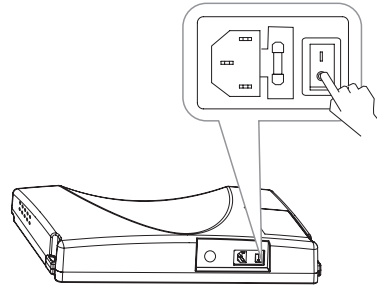
- 2 Return the backrest and legrest to their normal positions with the remote. (Or press the ON/Off key to restore the massage chair to the normal position)



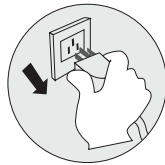
- 3 Put the controller back into the controller bag on the right armrest after the massage chair returns to the initial position.



- 4 Switch off the power.



- 5 Unplug the massage chair from the socket.



- 6 Clean the massage chair if necessary.

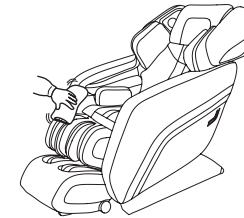
Attention!

- After using, press the ON/OFF to end the massage and wait for the massage chair to return to the initial position.
- Make sure to unplug the massage chair to avoid any unexpected injuries or damages.
- After using, turn off the power, unplug the electricity. Avoid moisture, dirt and aging of insulation to avoid damages.

Synthetic leather

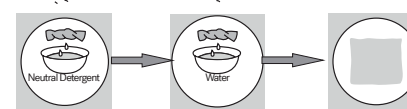
● **General cleaning**

Clean with tidy, soft and dry cloth slightly.



● **If leather is dirty**

1. Dip soft cloth into neutral detergent solution, squeeze it then clean the stain on the surface gently.
2. Wash cloth, squeeze it and wipe with detergent.



3. Clean it softly with dry cloth.
4. Allow to air dry (air blower is prohibited)

Cloth material

1. Dip cloth into weak neutral detergent, squeeze it and clean the material surface.

2. Brush the dirty parts with weak neutral detergent. (Avoid excessive brushing)

Excessive cleaning may cause damage to cloth material.

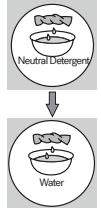
3. Wipe with water-dipped but squeezed cloth.

4. Allow to dry.



Plastic parts

1. Dip cloth into neutral detergent, squeeze it and clean.
2. Wipe with water-dipped but squeezed cloth.
3. Allow to dry.



Clean the controller

1. Wipe with soft cloth after squeezing.
2. Allow to dry.



Remote control



About cleaning

- Before cleaning, unplug the electricity, DO NOT touch plug with wet hands.
- Make sure hands are dry when plugging to the socket.
- Failure to follow instructions may result in electric shock or burns.

Trouble	Possible reason	Troubleshooting
The massage chair does not power on.	Check if the control is on or not.	Open control switch.
	No massage function selected.	Choose massage function.
	Check whether the plug and socket are securely connected.	Make sure plug and socket are connected.
	Wire or plug has been damaged.	Please ask authorized retailer for service and repairs.
	The fuse burned out.	Replace fuse of same specification.
	Something is wrong with inner circuit.	Please ask an authorized retailer to check and repair.
Hear a beep sound inside massager while in use.	It is the sound of an air pump, motor or mechanical parts.	Normal sound, no need to pay attention to it.
Different height of the left roller and right roller.	Massage rollers work on shifts.	This is a normal occurrence.
Sound suddenly becomes much louder while working.	Check if it is due to extended runtime.	Turn off the power to let the massage chair rest for at least 30 minutes before the next use.
	Inner parts worn out due to extended usage is normal.	Please ask an authorized retailer to check and repair.
Massage function suddenly stops while working.	Suddenly powers down.	Check the power connection, remote, and the fuse.
	Preset massage time has been reached.	Turn off power to let the massage chair rest for at least 30 minutes before the next use.
Neither the backrest nor the legrest can be adjusted	Check if there are any obstacles; for safety reasons sometimes the massage chair may automatically stop working.	Remove the obstacles; turn off the power to let the massage chair rest for at least 30 minutes before next use.
The massage chair can't return to its original position.	Excessive operation - Preset massage time has been reached.	Please ask authorized retailer for service and repair.
Electric wire or plug gives out heat	It may be a work overload from excessive use.	Turn off the power to let the massage chair rest for at least 30 minutes before next use.
	Other abnormal case	Stop using and ask authorized retailer for service and repairs.



Note: If you are experiencing an issue not notated above, please contact your authorized retailer for assistance.

Name	Jacuzzi® Massage Chair	Power	200W
Model	JPro503XR™	Weight Limit	300 lbs
Input Voltage	240V~ 50Hz	Total Weight	268 lbs
Safety Design	Class I	Packing Size	45in × 31in × 48in (L W H)

Limited Lifetime Jacuzzi® Massage Chair Warranty

- Warranties are limited to the original purchaser, for residential use, and cover defects in material and workmanship. Units in commercial use are excluded from any warranty coverage whatsoever.
- Frame and massage rollers have a limited lifetime warranty.
- Motors, boards, console, belts, and power supply have a 5-year replacement warranty.
- All other parts, including but not limited to, non-electrical/mechanical attachments including head cover, back pad, arm covers, wheel castors, seat cover, and footrest cover material are warranted against defects in material and workmanship as of the time of delivery only
- Consumer should register their product immediately upon purchase at <https://zenawakening.com/warranty-registration>, and keep original proof of purchase.
- See back cover for limitations and exclusions

Consumer Warranty Limitations and Exclusions

- **IMPLIED WARRANTIES OF MERCHANTABILITY AND FITNESS FOR A PARTICULAR PURPOSE ARE DISCLAIMED ALTOGETHER OR TO THE FULLEST EXTENT ALLOWED BY LAW.** This limited warranty takes the place of all other warranties, express or implied, in fact or at law, including implied warranties of merchantability and fitness for a particular purpose. The coverages of this limited warranty are for defects in material or workmanship, and not damage caused by installation, unauthorized repairs or modifications, improper use of electrical/power supply, loss of power, dropped product, a malfunction or damage of an operating part from failure to provide manufacturer's recommended maintenance, transportation damage, theft, abuse, misuse, neglect, vandalism, environmental conditions (such as, fire, floods, rust, corrosion, sand, dirt, windstorm, hail, earthquake, or exposure to weather conditions), damage inflicted upon the massage chair by improper use, or accidental damage incurred by negligent use (i.e. surpassing the stated weight limit (300 lbs), remote damage from dropping on the ground, etc.). This limited warranty is void if the manufacturer or its designated representative determines that the massage chair has been subjected to damage or failure due to installation of aftermarket parts.
- **THE COMPANY WILL NOT BE RESPONSIBLE FOR INCIDENTAL OR CONSEQUENTIAL DAMAGES OR LOSSES ARISING FROM ANY CAUSE.** This exclusion applies even if the Company was advised in advance of the possibility of such damages. This limited warranty does not include labor, transportation, or other costs incurred in the removal and/or re-installation of the original unit and/or installation of a replacement unit; any costs relating to obtaining access for repair; or loss of use damage, including loss of sales, profit or business advantage of any kind under any circumstances. The liability of Company under this limited warranty, if any, shall not exceed the original amount paid for the product claimed to be defective. Dated proof of purchase is required for a warranty claim. These disclaimers shall be equally applicable to any service provided by the Company and its designated representatives.
- Warranties are non-transferable, are available only to the original purchaser, and shall be in lieu of any other warranty, express or implied, including but not limited to any implied warranty or merchantability or fitness for particular use. The sole liability of the manufacturer and distributor, Galaxy Health and Wellness, and the purchaser's exclusive remedy shall be for the repair, or at Galaxy Health and Wellness's option, for the replacement of the defective part. Notwithstanding the above, if replacement parts for defective materials are not available, the Company reserves the right to use replacement parts that may be different from the part(s) that accompanied the original massage chair, including but not limited to different in appearance, configuration, performance and/or structure, in lieu of repair or replacement.
- All Warranties begin on date of delivery. The Company is not responsible for any warranty representation or warranty implied by any third party, including but not limited to a selling dealer. There are no warranties applicable to Jacuzzi® Massage Chairs except as expressly stated herein or as implied by applicable state and federal laws. Jacuzzi® and its affiliates are not responsible for any warranty obligations. The only warranty is offered and administered by Galaxy Health and Wellness, and is for home applications only.
- The Company will repair or replace a defective part if the failure is of the nature or type covered by the warranty, the user informed the Company or its Representative of the nature of the problem during the warranty period, conclusive evidence is provided to the Company by the user proving that the failure occurred or was discovered within the warranty period, and the Company or its designated representative has been permitted to inspect the part and massage chair on which it was used during regular business hours within a reasonable time after the problem was reported by the user. In order to obtain warranty service, contact 1-866-234-7727. All replacement parts assume the remaining warranty period of the part(s) replaced. The Company's warranty obligation shall be discharged upon tender of replacement or repair. The customer's refusal to accept the tender terminates the Company's warranty obligation.
- The consumer may also have other rights that vary from state to state. Some states DO NOT allow limitations on how long an implied warranty lasts, disclaimer of certain warranties, or the exclusion or limitation of incidental or consequential damages, therefore some of the above limitations may not apply to the Consumer.